

ASPRO DEVELOPMENT LIMITED
CUSTOM PARTS WITH **PASSION**

www.asprodvpt.com

Who are we?



We are your one-stop-shop for your technical parts in CHINA!

Since 2008, we have been supplying custom technical parts for our clients in the electronics sector and are proud to help them quickly bring their quality products to market.

The quality of our manufacturing facilities, our technical expertise and our sense of customer service have allowed us to become a recognized player in the manufacture of technical drawing parts for the electronic sector.

Our vision

Be your FIRST choice!

No matter the quantity or the technology, the urgency of the lead-time or the place of assembly, Aspro development helps you in the achievement of your goals in the supply of high quality products with outstanding service.



Our offer

Co-design, industrialization, high-mix in low and medium volumes, electromechanical subassemblies.

Our added value

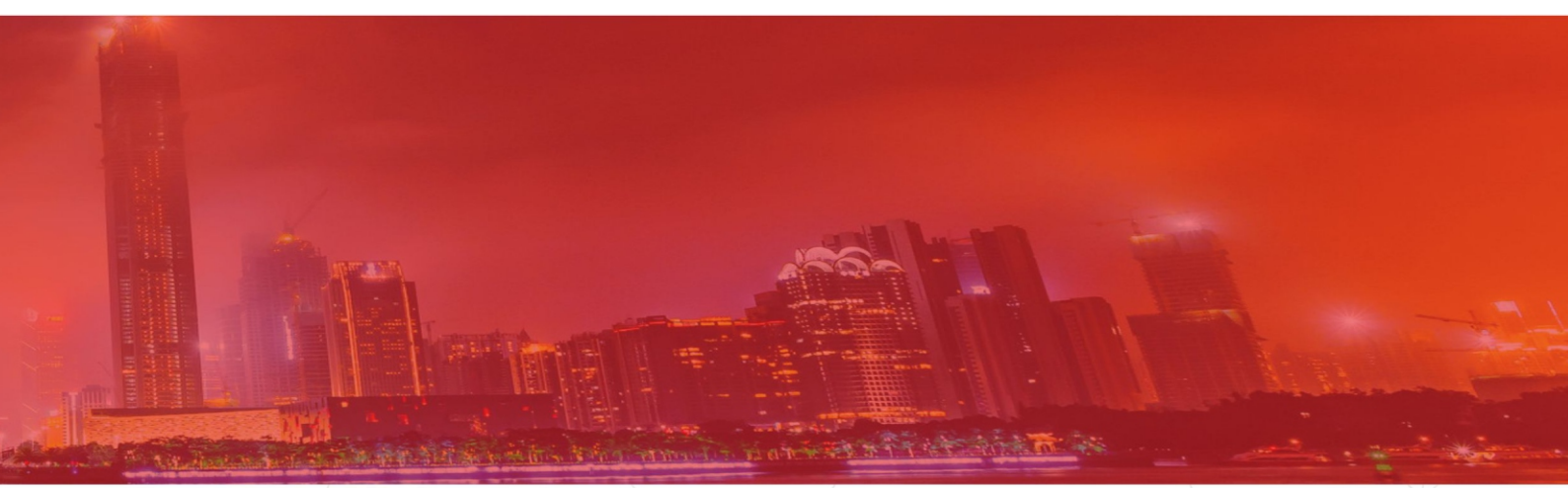
- 10000 m² factory
- A strong network of industrial partners accustomed to Western standards
- A multicultural team dedicated for your projects
- A multi-modal logistics service "door to door" that guarantees on time delivery



Quality

Stringent standards!

When you work with us, you can expect meticulous quality control and professionalism all along the lifespan of your products. Our quality team carries out dimensional and cosmetic controls at all stages of production and in accordance with specifications (critical dimensions, cosmetic standard, mechanical/chemical testing) and ensures that the manufacture process follows rigorous operating procedures.



Precision sheet metal and stamping

We cut the prices, not the quality!

- The various sheet metal production techniques make it possible to produce pieces with complex shapes, thin walls, very resistant material with a multitude of choice of finishes and colors, painted or plated
- We have modern manufacturing facilities suitable for all volumes particularly high-mix and types of products: enclosures, front faces, chassis, doors, busbar, shieldings...
- We make our own tools and master all production processes, including stamping, NCT punching, laser cutting, semi-automatic bending, welding, crimping, riveting, and surface treatment.

The materials used:
Steel: SGCC, SECC, SPCC, SUS 304, SUS 316, SUS 410, SUS 430, SPTE, CuBe2
Aluminum: AL 5052, AL1050



For your precision parts in die casting, machining, we make cosmetic parts, enclosures, heatsinks...

- enclosures, chassis, front face, heatsinks, valves, LED lighting components
- Material for die casting:
Aluminum: A380, A360, ADC12, 383, ADC1
Zinc: Zamak 2, Zamak 3, Zamak 5, Zamak 7
- Material for machining:
Aluminum: 5052, 6063, 6061, 7075, 6082-T6
Stainless steel: SUS 304, SUS 316
Others: brass 260, copper C101
- Surface treatment: powder or spray painting, SurTec650, anodization, zinc plating, nickeling, chromate plating, e-coating
- Our tolerances can reach +/-0.01mm, depending on the product's complexity

Die casting, precision machining, profiles

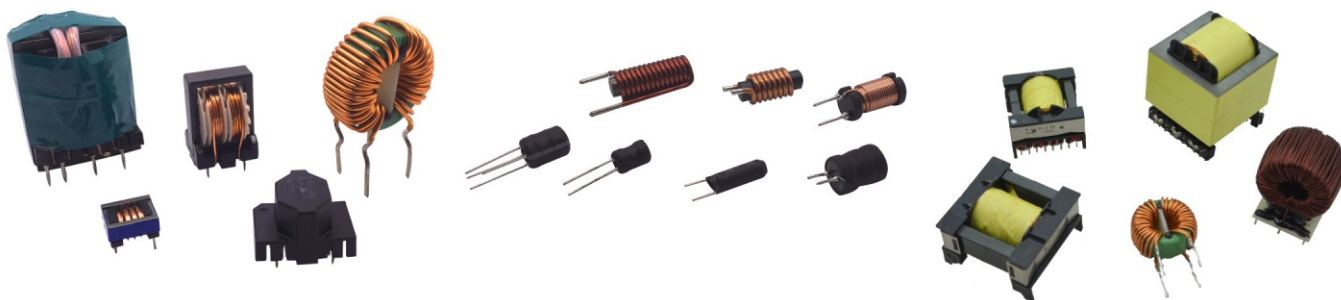


Custom transformers and magnetic solutions

Aspro offers a full range of highly reliable transformers and electromagnetic solutions serving the entire electronics sector including security, telecoms and banking industries.

Our products are custom-made according to specifications and meets international standards such as UL / VDE, CQC, CE, ROHS.

- Selfs - inductors
- Bobines
- Toroidal transformers
- Power transformers



Plastic injection is one of the preferred means of production of many equipment: not only is it simple and reliable, but also very effective.

Its advantages: parts with highly complex shapes, low production costs and excellent repeatability.

We also offer bi-injection or over-molding to combine multiple materials in one part.

Secondary operations include ultra-sound welding, hot melt, installation of over-molding or post-molding inserts, metallization, decoration.

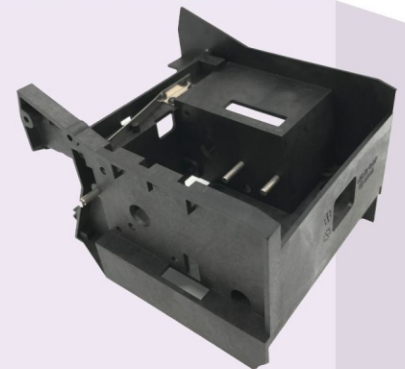
Plastic injection

Our products:

enclosures, front face, chassis, precision gears, mechanical sub-assemblies

Materials used:

Plastic: PC, ABS, ABS/PC, PMMA, PA, HDPE, POM
Elastomer: TPE, TPU



Prototyping

Our knowhow in various prototyping processes - CNC, silicone mold, laser cutting, allows us to offer a wide range of products: cosmetic parts, transparent parts with mirror polished surface, various surface treatments (painting, soft touch, metalizing...)

Commodity

Sheet metal
Plastic
CNC machining

Production leadtime

5-15 days
5-8 days
7-10 days

The advantage of working with Aspro is that we know how to industrialize your product and can provide you with design for manufacturing (DFMs) in the early stages of the product development to reduce cost and time to market.



Other OEMs

To complete our product range, we can provide you with:

- Membrane keyboard, silicone keyboard, gasket
- Wire harnesses, power cables (low/high voltage), ribbon cables
- We can also help you to develop the prototypes of your electronic devices. We can turn your project from your idea to mass production of your products, from "soft" to "hard" thanks to our engineers specializing in different disciplines.



Contact us! Aspro Development Limited

👤 Contact: Mr Boom-Ghou LAM
☎ +86 188 24 911 919 📞 +86 (0) 757 85 632 532
✉ bglam@asprodevpt.com

📍 **Sales office address**
Room 1313, 13/F Jinsha international plaza
No 2 Liguang road, Foshan 528244, CHINA

📍 **Factory address**
4 Jiaoshi street, Jianxin road, Taimei Town, Huizhou City, CHINA