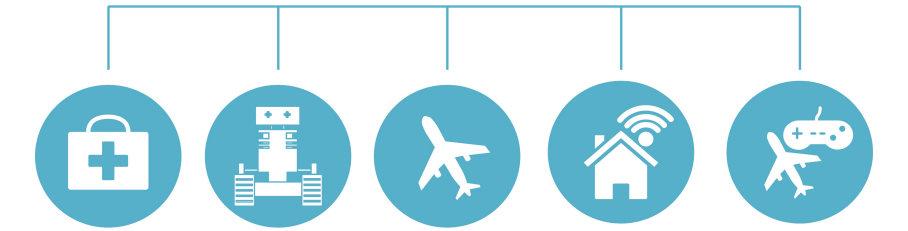


THE TYPICAL PRODUCTS WE BUILD

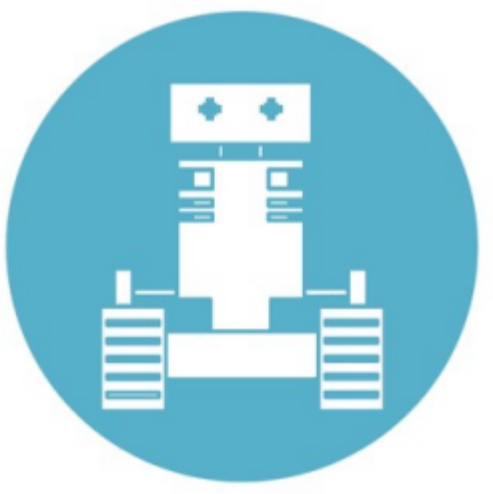


OUR EXPERTISE : SYSTEMS SOFTWARE DESIGN



- ▶ BSP + OS design on Linux / Zephyr / RIOT / FreeRTOS
- ▶ Support to hardware designers for software integration
- ▶ System & application software design :
 - Device drivers
 - Control software
 - User Interfaces
 - Cloud platforms & applications
 - Embedded & online web applications
- ▶ System updates / Over-the-air updates
- ▶ Connectivity : wired / wireless / satellite / LoRaWAN links
- ▶ Security : Secure boot, system encryption, key management, system hardening
- ▶ Reliability and traceability for DO-178 / IEC 62304 process compliance

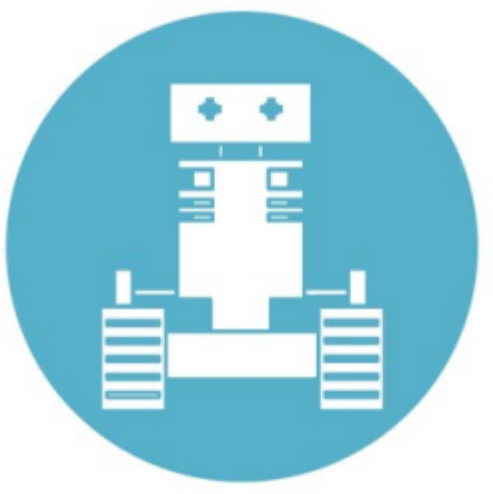
CUSTOMER CASE : BSP FOR LOGISTICS ROBOT



Custom BSP for an autonomous robot (AGV) - Automatic warehouse conveyor

- ▶ Yocto BSP on i.MX6 / Mainline Linux Kernel / PREEMPT_RT real-time support
- ▶ Double bank OS / Automated software & bootloader updates
- ▶ Linux device-tree extensions & adaptations
- ▶ Ethernet, RS485 & CAN bus support
- ▶ SDK export for application software development

CUSTOMER CASE : BSP FOR LOGISTICS ROBOT



Custom BSP for an autonomous robot (AGV) - Automatic warehouse conveyor

- ▶ Yocto BSP on i.MX6 / Mainline Linux Kernel / PREEMPT_RT real-time support
- ▶ Double bank OS / Automated software & bootloader updates
- ▶ Linux device-tree extensions & adaptations
- ▶ Ethernet, RS485 & CAN bus support
- ▶ SDK export for application software development

CUSTOMER CASE : ROBOTIZED MEDICAL BED



Embedded Software Design – Robotized medical bed for respiratory issues therapy

- ▶ Custom Buildroot-based Linux OS on i.MX6 CPU
- ▶ Custom HMI and control software using C++/Qt
- ▶ Sensors and actuators data feed management
- ▶ Ethernet, CAN, ModBus/TCP, UART, USB interfaces support
- ▶ Double bank OS with integrated software updates
- ▶ Medical-grade process for traceability & reliability

CUSTOMER CASE : COMMERCIAL AIRCRAFT NETWORK BACKBONE



OS & System Software for an avionics network and data controller

- ▶ Custom OS & boot loader features
- ▶ Custom software interfaces and services for ARINC / FPGA / discrete connectivity
- ▶ Linux network switch improvements integrated into the mainline tree
- ▶ Integration of hardware Ethernet switches with Software Defined Networking features
- ▶ System security & integrity hardening
- ▶ Configuration management system w/ embedded Web Interface
- ▶ Avionics (DO-178E) process for traceability & reliability

CUSTOMER CASE : SMART BUILDING WATER METER & VALVE



Full-Stack Software Design for a connected water meter and valve

- ▶ Support to the hardware design team for fluid software integration
- ▶ Custom OS & boot loader features design
- ▶ Custom drivers for water meter and control valve hardware
- ▶ Embedded config management system + web interface
- ▶ Amazon (AWS IoT) based cloud data management platform
- ▶ End-User web application for online product management



Linux Ethernet Switch drivers for aerospace Infotainment systems

- ▶ Improve Linux support for hardware-accelerated Ethernet switching
- ▶ This focused mainly on the Marvell LinkStreet switches family
- ▶ Collaborate with upstream kernel maintainers for mainline integration