

The image features two anatomical models of human joints. On the left is a hip joint model with a yellow acetabular cup and a metal femoral head. On the right is a knee joint model with a metal femoral condyle and a metal tibial plateau. Both models are mounted on thin metal rods. The background is a blurred laboratory or clinical setting.

INDUSTRY SOLUTIONS

MEDICAL

**HEALTH – THE MOST
IMPORTANT THING IN LIFE**

Clamping solutions for the medical technology industry

www.hainbuch.com


HAINBUCH
WORKHOLDING TECHNOLOGY

ONE OF THE MOST INNOVATIVE INDUSTRIES IN THE WORLD: MEDICAL TECHNOLOGY



Your requirements – our solutions

With its high degree of innovation and rate of development, medical technology is one of the most demanding industries. It is not just the high standards imposed on hygiene and the bio-compatible materials that are difficult to machine, it is also the technical requirements imposed on tolerances and roughness values that necessitate extremely complex production processes. We are the right partner for these types of requirements. We have already implemented first-class solutions for many work-pieces and implants, such as acetabular cup, hip joint, spinal implant, dental screw and hip stem.

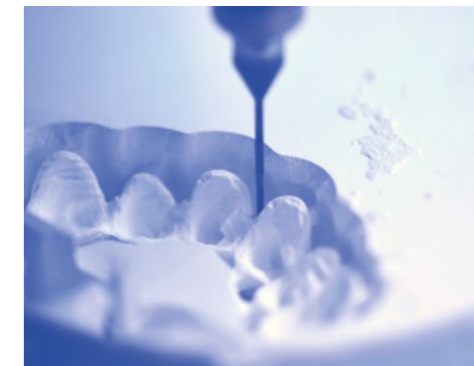
HAINBUCH – the specialists in clamping devices

- Over 65 years of experience in the field of workholding technology
- More than 150 patents – creativity is part of our corporate philosophy
- Experts in the area of high-precision clamping solutions
- In-house production of composite components with mineral cast or also carbon fiber reinforced plastic [CFRP]
- Quick change-over systems for reduced set-up times
- Years of experience with engineering projects

Our expertise supports your competencies

Are you looking for a solution for sensitive, mark-free and residue-free clamping of ceramic work-pieces or powerful clamping of titanium? If so, then you have come to the right place – become a HAINBUCH fan!

Just give us a call: +49 7144.907-333 or contact us via email at sales@hainbuch.de



YOUR CHALLENGE – COMPLEX WORKPIECES

Medical tools



5x changer microscope



Endoscope clamp



Pill puncher



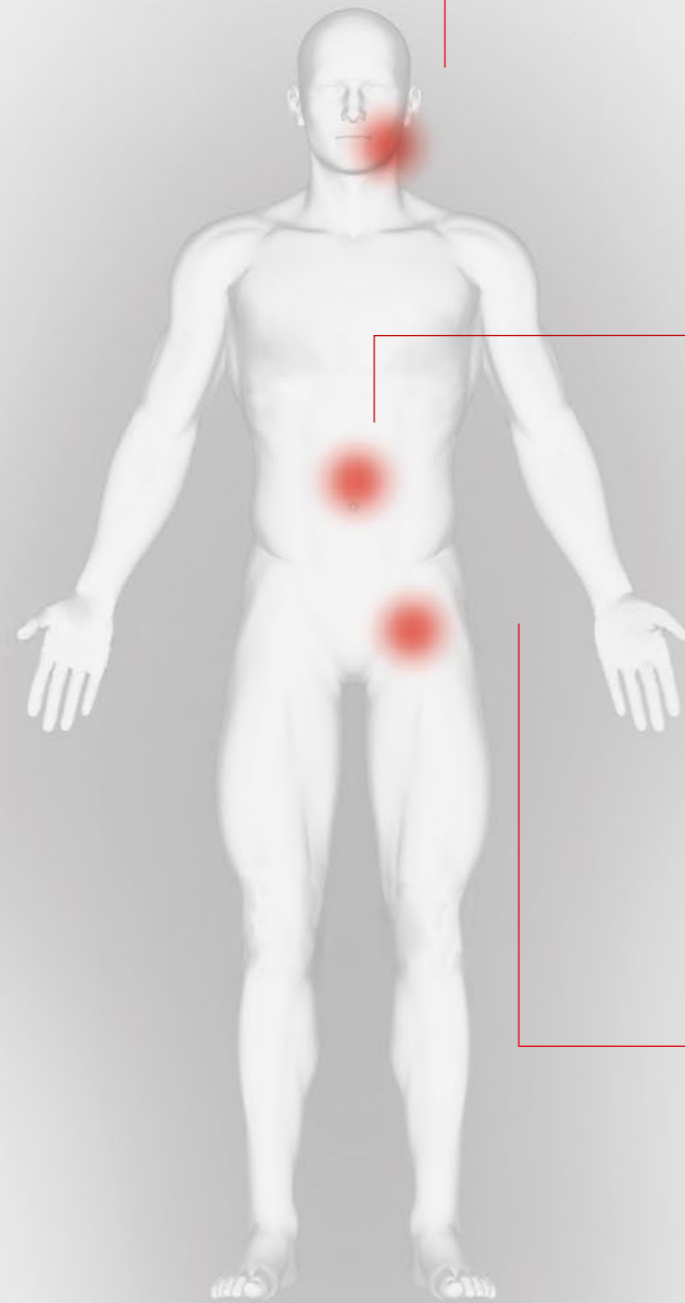
Tongs



Endoscope head



Focusing head



Jaw



Jawbone implant

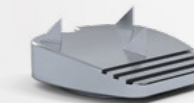


Jaw implant screw

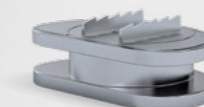
Spinal column



Spinal implant



Spinal implant



Intervertebral disk prosthesis



Spinal stabilizer



Pedicule screw

Hip



Acetabular cup



Hip stem



Artificial femoral head

HAINBUCH CLAMPING SOLUTIONS



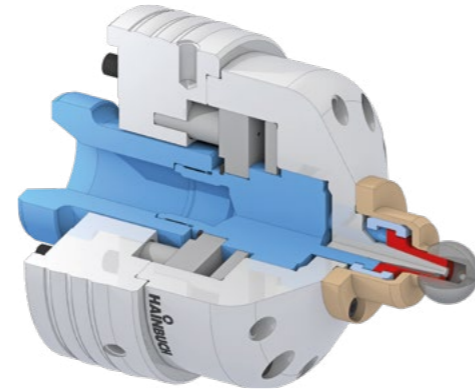
Workpiece
Clamping task
Machining

Ceramic hip shaft
I.D. clamping
Turning the outer contour

Solution: MANDO T212 mandrel

Workholding technology

- I.D. clamping with pull-back effect without draw bolt
- Segmented clamping bushing with reduced slots on the clamping diameter for high precision



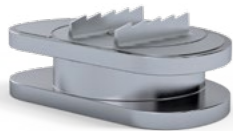
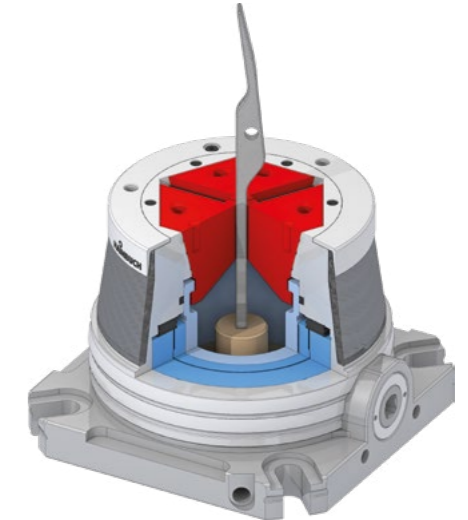
Workpiece
Clamping task
Machining

Surgical steel tongs
O.D. clamping
Milling the contour

Solution: MANOK plus CFK SE vise

Workholding technology

- Sensitive manual clamping
- Workpiece stabilization through axial draw force applied against the workpiece end-stop
- Low weight
- Vibration damping thanks to CFRP



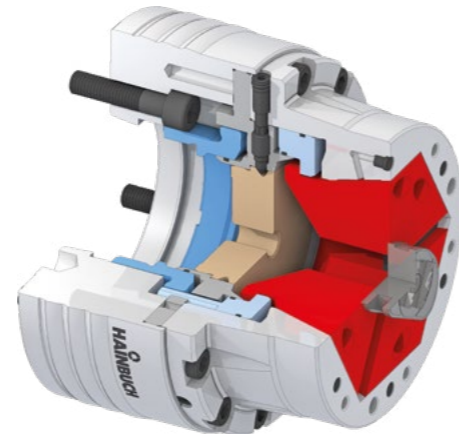
Workpiece
Clamping task
Machining

Surgical steel lumbar disc prosthesis
O.D. clamping without clamping marks
Milling the contour

Solution: TOPlus mini chuck

Workholding technology

- Not sensitive to contamination thanks to full-surface contact between hexagonal clamping head and chuck body
- Minimal interference contour for maximum machining space
- Special bio-compatible coating of the clamping elements for avoidance of abrasion and deposits of foreign substances on the parts



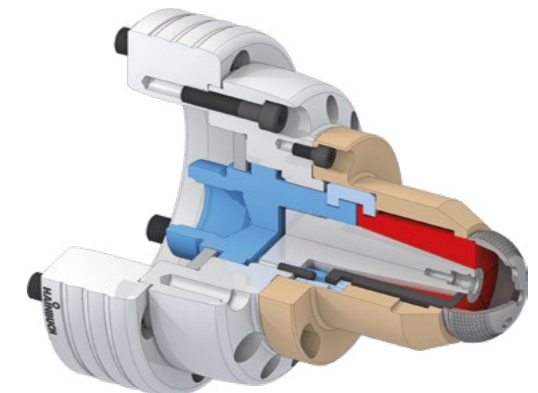
Workpiece
Clamping task
Machining

Titanium acetabular cup
I.D. clamping without clamping marks
Turning and embossing of the outer contour

Solution: MANDO T212 mandrel

Workholding technology

- Rigid clamping with extended mandrel and adapted workpiece end-stop
- Special treated surface to prevent clamping marks
- Optimum support in the bore due to vulcanized segmented clamping bushing
- Better accessibility of the tools due to extended cone



WE ARE AT YOUR SERVICE – WORLDWIDE

4 locations in Germany | 12 international subsidiaries | more than 40 sales agencies



Find our global subsidiaries and sales agencies at www.hainbuch.com

1000/06.19 Part no. 60000238 Subject to technical changes.

HAINBUCH GMBH · WORKHOLDING TECHNOLOGY
Postfach 12 62 · 71667 Marbach · Germany
Erdmannhäuser Straße 57 · 71672 Marbach · Germany
Tel. +49 7144.907-0 · Fax +49 7144.18826


HAINBUCH
WORKHOLDING TECHNOLOGY