

CAD
INTEROPERABILITY
API

www.coretechnologie.com

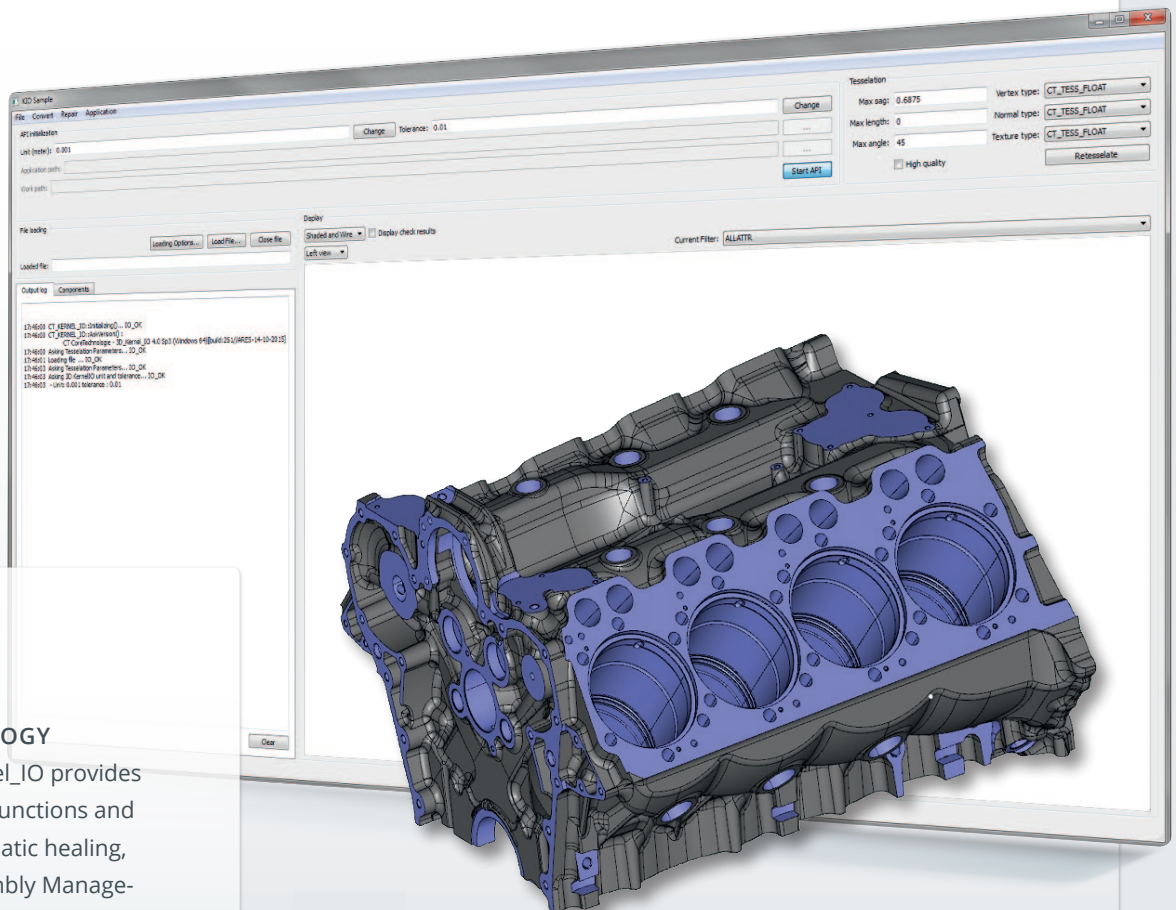


3D **KERNEL_io**

Embedding our API – makes all current CAD formats available in your application – Cost and time efficient.

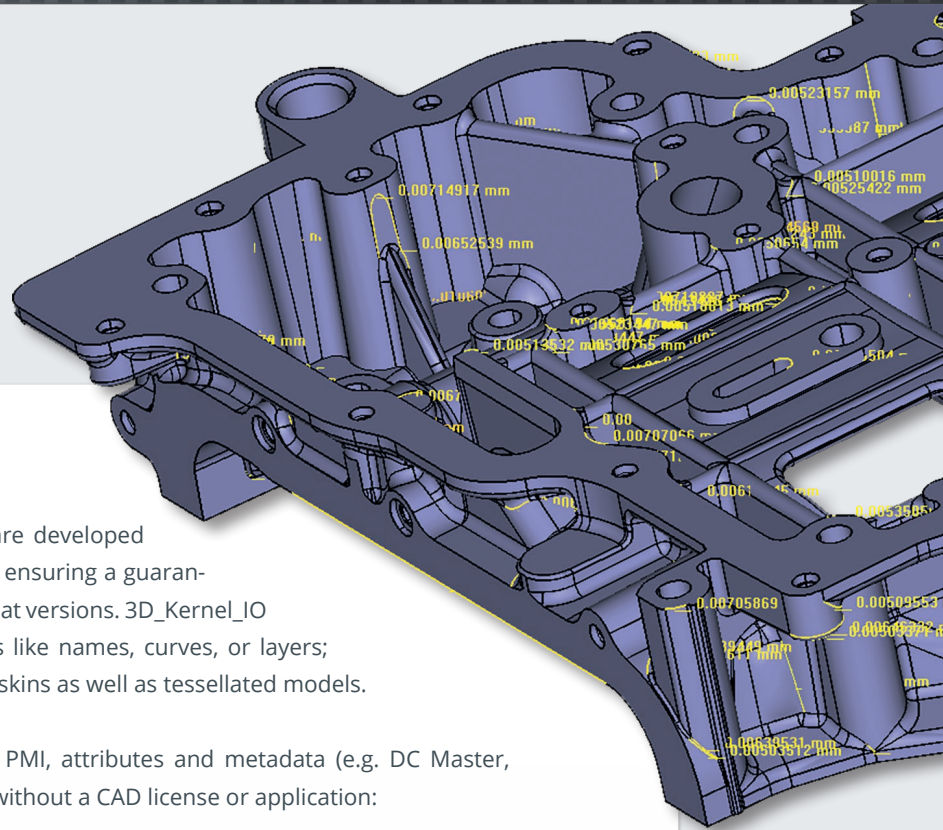
INTEROPERABILITY SOLUTIONS

Today engineering software companies and their customers are looking for new ways to read a variety of 3D CAD data formats. 3D_Kernel_IO is the leading API with native readers based on the C++ programming language. Allowing efficient, precise and independent access to all native and standard formats.



PROVEN TECHNOLOGY

In addition 3D_Kernel_IO provides unique and proven functions and modules with automatic healing, PDQ-Checker, Assembly Management, Precision Tessellation and Model Comparison to expand the capabilities of your software.



NATIVE INTERFACES

All standard and native interfaces are developed and maintained by CoreTechnologie ensuring a guaranteed support of the newest CAD format versions. 3D_Kernel_IO reads assembly structure, attributes like names, curves, or layers; entities like points, B-Rep solids and skins as well as tessellated models.

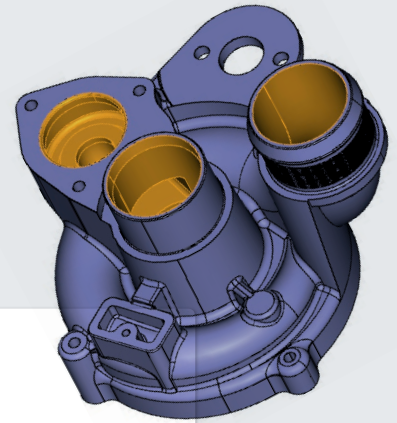
Furthermore, features with history, PMI, attributes and metadata (e.g. DC Master, publications) are directly accessible without a CAD license or application:

SUPPORTED FORMATS

- NX™
- CATIA®
- Creo®
- SOLIDWORKS®
- ProE®/Wildfire
- Inventor®
- IDEAS™
- JT-Format
- XT-Format
- STEP AP 203/214/242
- ACIS®
- IGES
- and many more

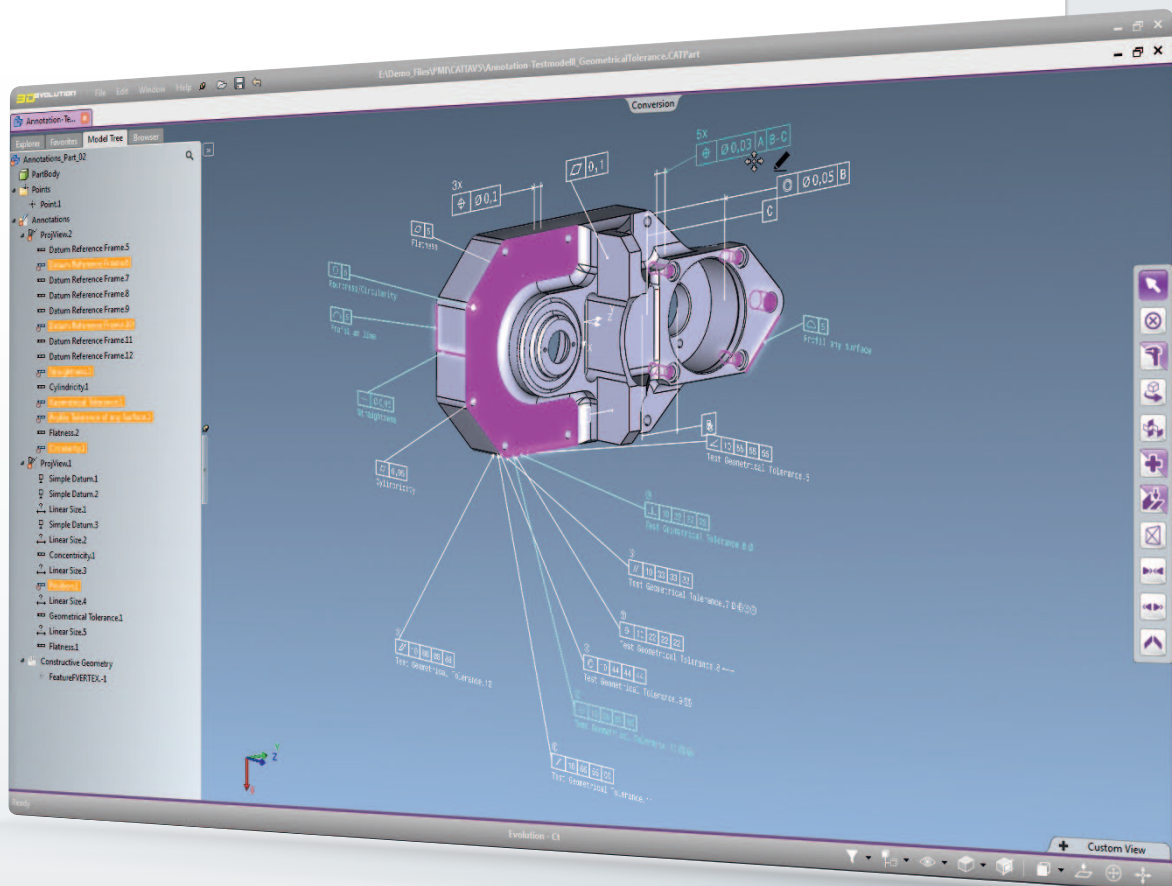
ADAPTIVE CONVERSION AND HEALING

During the conversion process, 3D models are adapted to the tolerance and mathematics of the target system to provide exceptional quality. Healing functions will automatically correct failures – such as gaps, overlaps – twisted and mini-faces. Even a set of single surfaces can be sewn together automatically into watertight solids with user-defined accuracy.



FLEXIBLE LICENSING

3D_Kernel_IO allows software editors to satisfy all their interoperability needs, dealing with only one vendor, one API and one predictable and affordable annual licensing fee or per license cost. The licensing system can be adopted as an open library with code protection, or optional locked API based on Codemeter License manager.



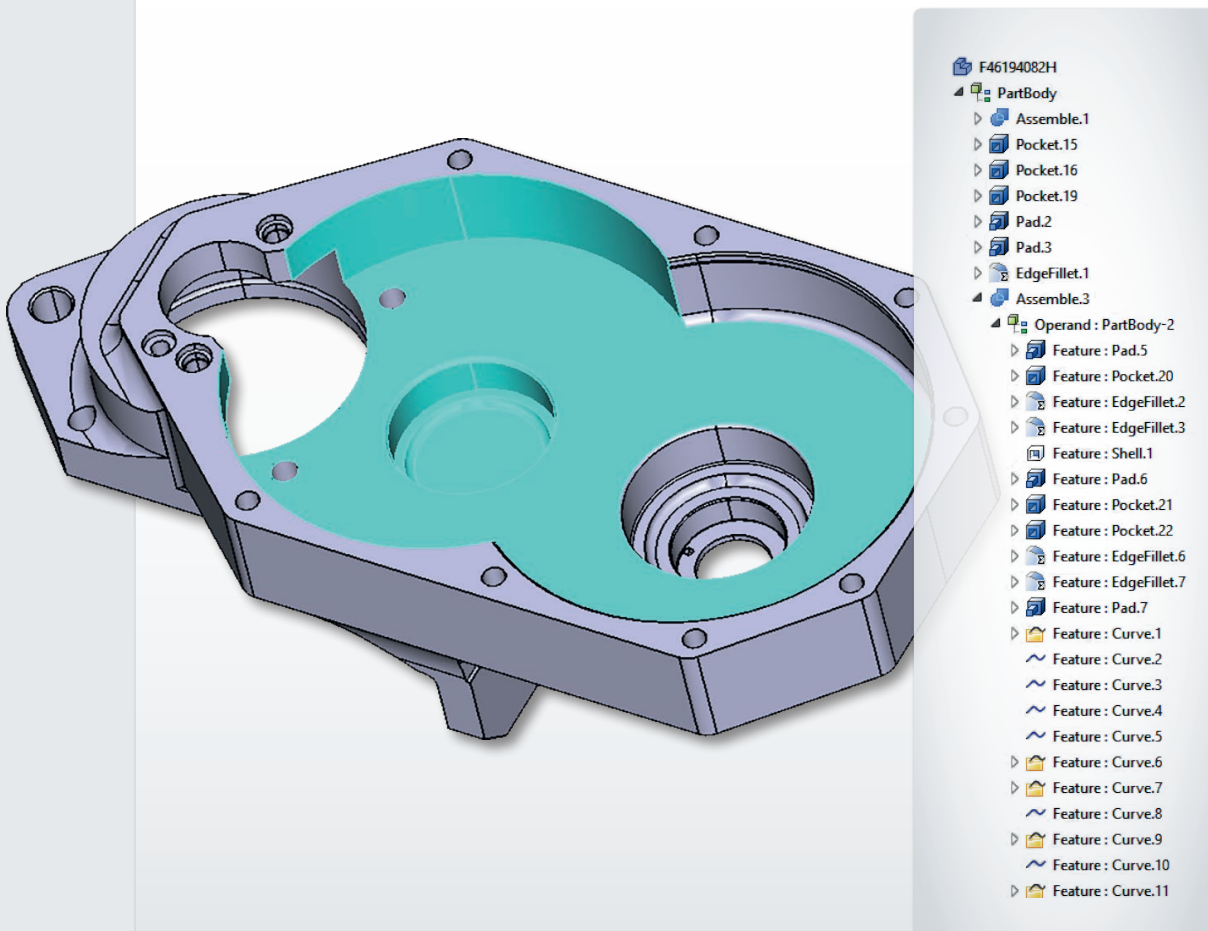
PMI INFORMATION

3D_Kernel_IO native interfaces also reads PMI information like dimensions, tolerances, annotations, datum's and text. All links to the geometry provided; is mandatory to use PMI in Metrology and CAM applications. Generalized interrogation functions allow easy access to PMI data of any CAD format providing important information for a seamless PLM process.

Providing specific functionalities for CAD, CAM, CAE, VR and Metrology.

UNIQUE FEATURES

3D_Kernel_IO is worldwide the unique tool for history and features. The extraordinary tool maps the construction history and parameters directly from the binary file without requiring access to a license of the source CAD system. Additional 3D_Kernel_IO native interfaces read featured information and PMI of threads, holes, chamfers, fillets, patterns, drafts, pockets, extrusions, other feature types as well as assembly features. The data structure represents all feature types used by today's CAD systems.

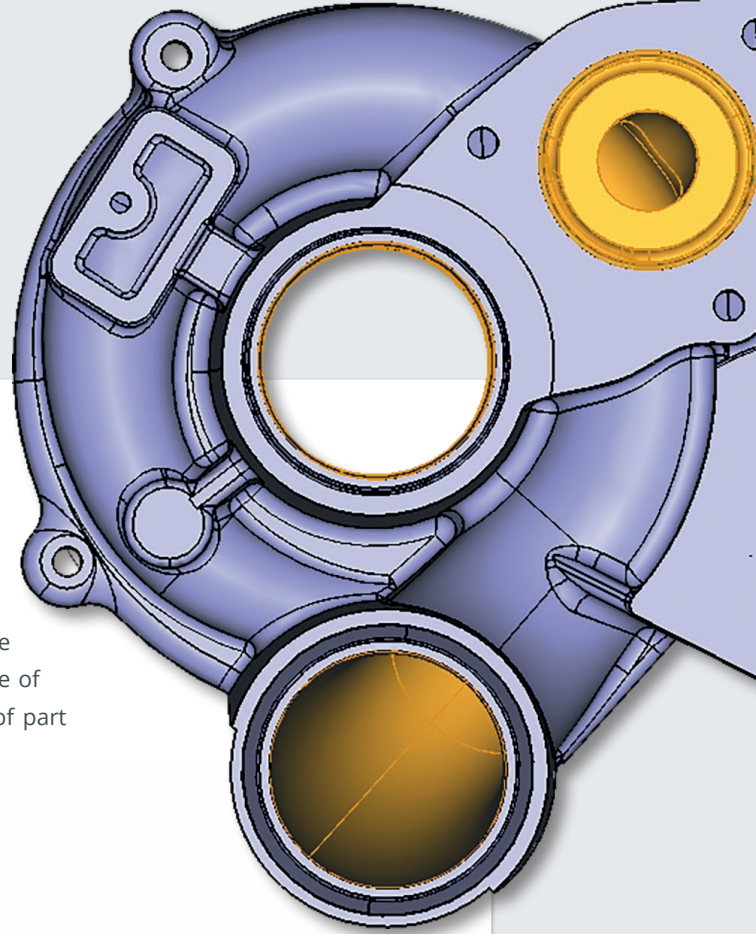


HISTORY AND PARAMETRIC INFORMATION

The associated faces of each feature on the B-Rep model will be indicated by 3D_Kernel_IO and can be traced easily. Threads information is provided, which is important for annotations and PMI that reference construction elements like sketches, planes or datum axes.

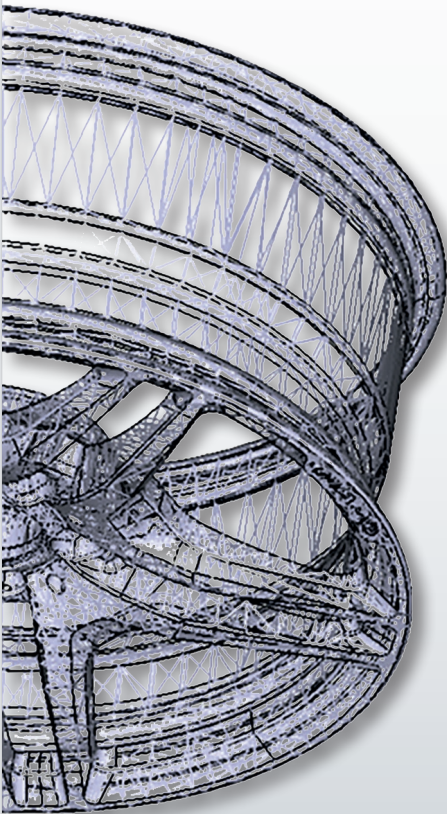
GEOMETRIC COMPARISON

3D_Kernel_IO can find geometric differences between two objects. The Kernel conveniently allows for comparison of objects to part solid, body or face; while setting minimum distance detected. The parameters can be set for the comparison of distance of minimum and maximum color variance by the type of part solid, body or face.



TESSELLATION

The accurate and fast tessellation of 3D models as well as healing functions for triangulated models optimize CAD data for digital mock-up, virtual reality and high-end rendering. Parameters for maximum chord deviation, triangle size, and the angle between adjacent triangles are used for B-Reps or the recalculation of triangulated models. VRML, JT and STL are available.





Interfaces List

Last update: 13.04.2021

Interface / Format	Reading						Writing					
	Version	Facet Triangle	BREP	Features	Asm	GD&T	Version	Facet Triangle	BREP	Features	Asm	GD&T
3DM : OpenNurbs – Rhino (.3dm)	6	✓	✓	-	-	-	3		✓	-	-	-
ASC : Medusa 3D (.asc)	-	✓		-	-	-				-	-	-
CADDs explicit parts & CAMU (_pd_ps)	4 & 5		✓		✓		4 & 5		✓			
CATIA V4 (.model, .dlv, .exp, session)	All 4.xx	✓	✓	✓	✓		All 4.xx	✓	✓		✓	
CATIA V5 (.CATPart, .CATProduct, .cgr)	R10 → R31	✓	✓	✓	✓	✓	R18		✓		✓	
CATIA V6 (.3Dxml)	2011 → 2013X	✓	✓	✓	✓	✓						
3D Experience (.3Dxml)	2014 → 2020X	✓	✓	✓	✓	✓						
E3I : Matra EUCLID 3 (.e3i)	3.2	✓	✓		✓	-						-
EDX : Straessle EUKLID (.edx)	-	✓	✓	-	-	-	-	✓	✓	-	-	-
GLTF (.gltf, .glb)	2	✓	-	-	✓	-	2	✓	-	-	✓	-
I-DEAS (.arc, .unv)	All → NX5	✓	✓	✓	✓							
IFC (.ifc)	IFC2X3	✓	✓		✓							
IGES (.igs)	5.2 & 5.3		✓	-		-	5.2 & 5.3		✓	-		-
Inventor (.ipt, .iam)	All → 2021		✓		✓							
JT (.jt)	7.0 → 10.5	✓	✓	-	✓	✓	8.1	✓	-	-	✓	✓
NAS (Nastran)	-	✓		-		-				-		-
Pro/Engineer part files (.prt, .asm)	13 → Creo 7	✓ up to Creo 2	✓	✓	✓	✓						
Pro/Engineer neutral files (.neu)	13 → WF5	✓	✓	-	✓	-				-		-
ROBCAD (.rf)	-	✓	✓	-	✓	-	-	✓	✓	-	✓	-
SAT : ACIS (.sat)	All → R27	-	✓	-	✓	-	All → R19	-	✓	-	✓	-
Solidedge (.par, .asm, .psm)	All → 2020		✓		✓							
Solidworks (.sldprt, .sldasm)	99 → 2021		✓	✓	✓	✓						
STEP (.stp)	203/214/242	✓	✓		✓		214	✓	✓		✓	
STL (binary, ascii)	-	✓	-	-	-	-	-	✓	-	-	-	-
XT Format (.x_t)	All → 32	-	✓	-	✓	-	9	-	✓	-	✓	-
NX / Unigraphics (.prt)	11 → CR 1957		✓	✓	✓	✓	5		✓		✓	
VDA (.vda)	-	-	✓	-	-	-	-	-	✓	-	-	-
VRML (.wrl)	97	✓	✓	-	✓	-	97	✓	✓	-	✓	-

- ✓ : Available
- ✓ : Development in progress
- : Not available in format



ABOUT CORETECHNOLOGIE

CoreTechnologie is an international software developer with locations in Germany, France, USA, Italy, Japan, India and Great Britain. In the CAD interoperability universe, CoreTechnologie is the leading global producer of the most comprehensive 3D conversion and collaboration software tools available today. Our goal is future-oriented development and customer centric technology to optimize interoperability, thus helping organizations to streamline their Product Life Cycle management. We work with highly professional automated processes and we are always one step ahead from the latest technology. The top priority for us is that our software has the possibility to adapt to all customer requirements.

The customer portfolio by CoreTechnologie comprises more than 400's customer from several sectors like automotive-, aerospace-, mechanical engineering- and consumer goods industry.



Trademarked: CATIA® and SOLIDWORKS® are registered trademarks of Dassault Systèmes. NX™ software in the Tecnomatix® portfolio is a trademark of Siemens Product Lifecycle Management Software Inc. Creo® is a registered trademark of PTC Inc. 3D_Evolution® is a registered trademark of CT CoreTechnologie GmbH.

06/2019

www.coretechnologie.com

GERMANY

CoreTechnologie GmbH
Klinger 5
D-63776 Mömbris
Phone: +49 (0)6029 98999-10
info@de.coretechnologie.com

FRANCE

CoreTechnologie Vente
151 route de Vourles
F-69230 Saint-Genis-Laval
Tél: +33 (0)4 78 61 79 42
info@fr.coretechnologie.com

JAPAN

CoreTechnologie Asia Co. Ltd
〒 100-0006
Tokyo Chiyoda-ku Yurakucho
1-6-3 Hibiya Eisen Bldg.
Phone: +81 (0) 3 35 91 26 19
info@jp.coretechnologie.com

U.S.A.

CoreTechnologie Inc.
20750 Civic Center Drive, Ste 370
Southfield, Michigan 48076
Phone: +1 (248) 996 8464
info@us.coretechnologie.com