

uSense

by OPTIKAN

Non-destructive testing station for quality inspection

uSense is a comprehensive submillimeter 3D imaging system designed for offline quality control in the industry. Equipped with a complete range of distinctive features and high-performance capabilities, uSense is suitable for inspecting various dielectric materials. uSense is also highly effective for research purposes and educational applications.

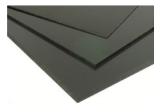
uSense comes with interchangeable to adapt diverse needs, integrated laser pointers to indicate the zone of incidence, a touchpad embedding the proprietary software of control and processing of the system.



Wood



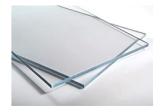
Ceramics



Polymers



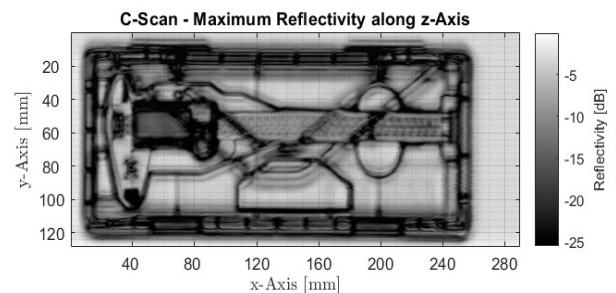
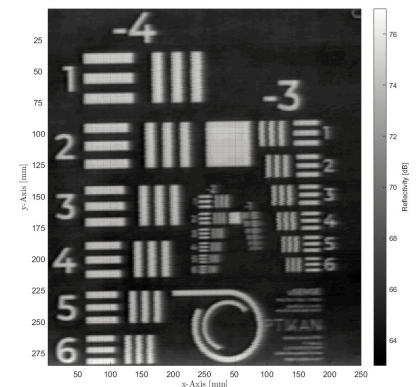
Composites



Glasses



Textiles



Operating Heads

Central frequencies	120; 240; 300 GHz
Frequencies window	21; 48; 38 GHz
Optics focal length	25 to 125 mm

Imaging Unit

Acquisition rate	66 Hz
Scanning area	300 x 600 mm ²
Spatial resolution	down to 1,0 mm
Depth resolution	Down to 3,0 mm

Applications

- > In-lab quality control
- > Material characterization
- > In-depth inspection

Key Features

- > High sensing speed
- > Large scanning area
- > All-in-one design