



—
Injecting
Knowledge

Index

1. Facilities
2. Bramp and the Environment
3. Strategic Goals
4. Turnover
5. Markets
6. Intervention Areas
7. Location
8. Contacts

Facilities



Prohibited the distribution or copying of content

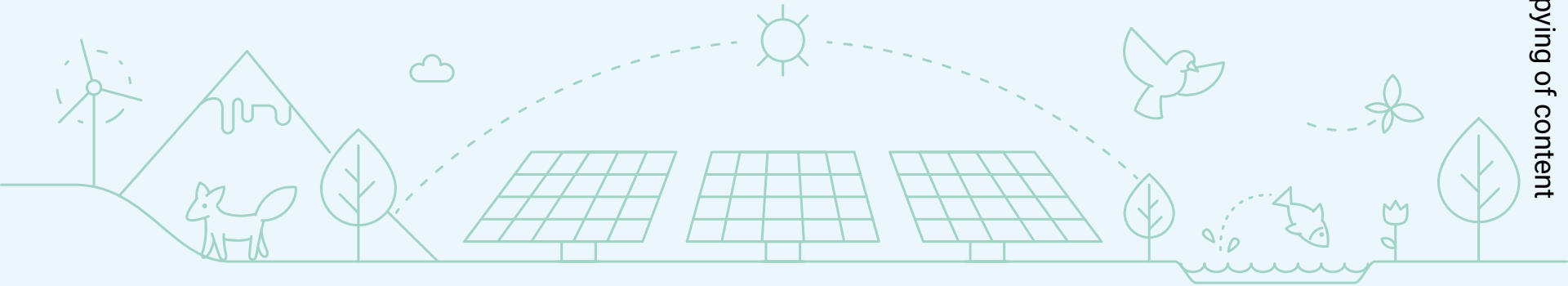
Bramp and the Environment

464 ton CO₂/year

Avoided CO₂ emission

893 MWh

Production in average year



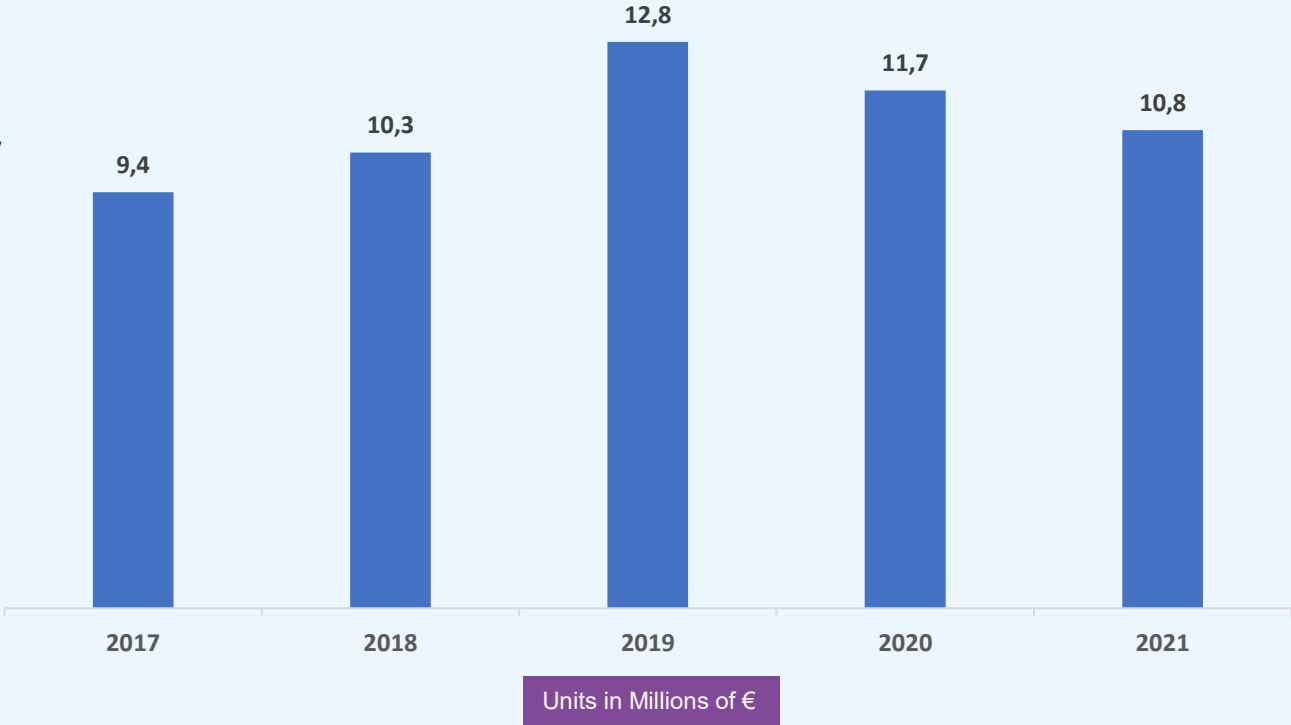
Strategic Goals

Consolidate the position of technological partner, of high performance and assurance, based on a permanent posture of innovation in terms of product, process and organizational system.

Assuming as a Mission

Provide plastic parts and processing tools with high specification level, accompanied by technical services which ensure the Customer satisfaction.

Turnover



Prohibited the distribution or copying of content

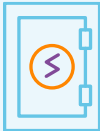
Markets



Automotive



**Safety and
Transportation**



**Electric and
Electronic**

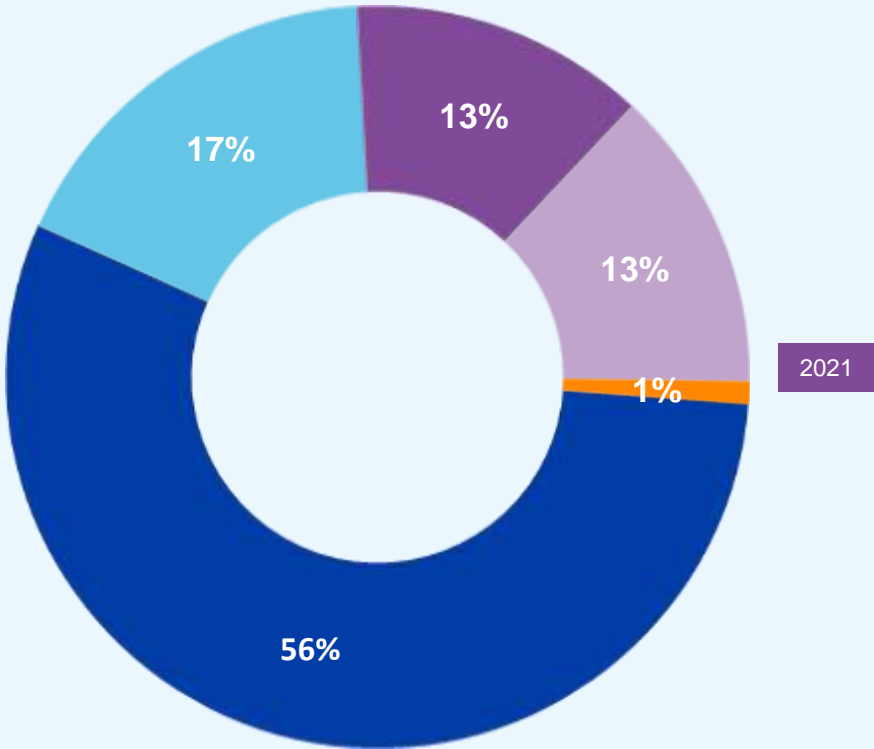
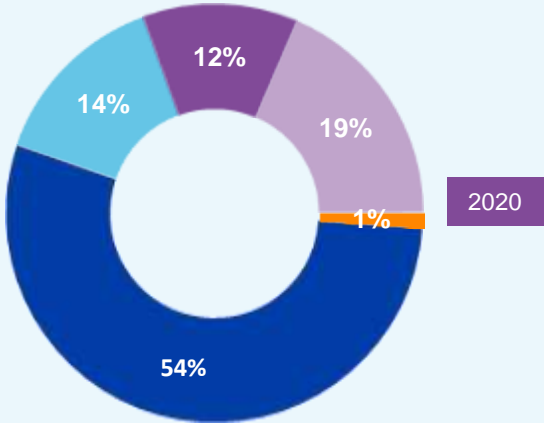


**Home
Appliances**



Houseware

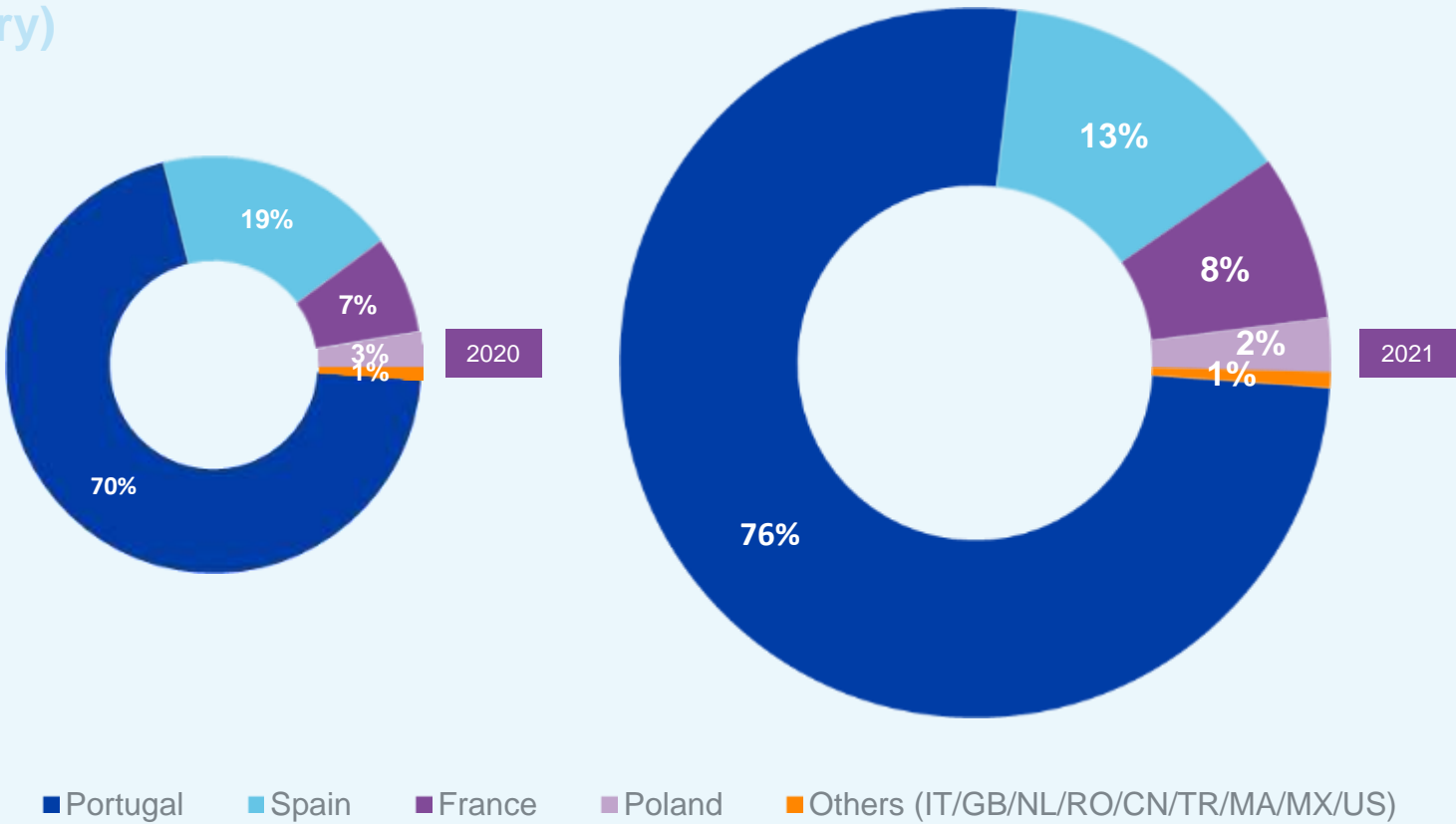
Market Share (Sector)



- Automotive
- Electric and Electronic
- Safety and Transportation
- Houseware and Household items
- Others

Prohibited the distribution or copying of content

Market Share (Country)



Prohibited the distribution or copying of content

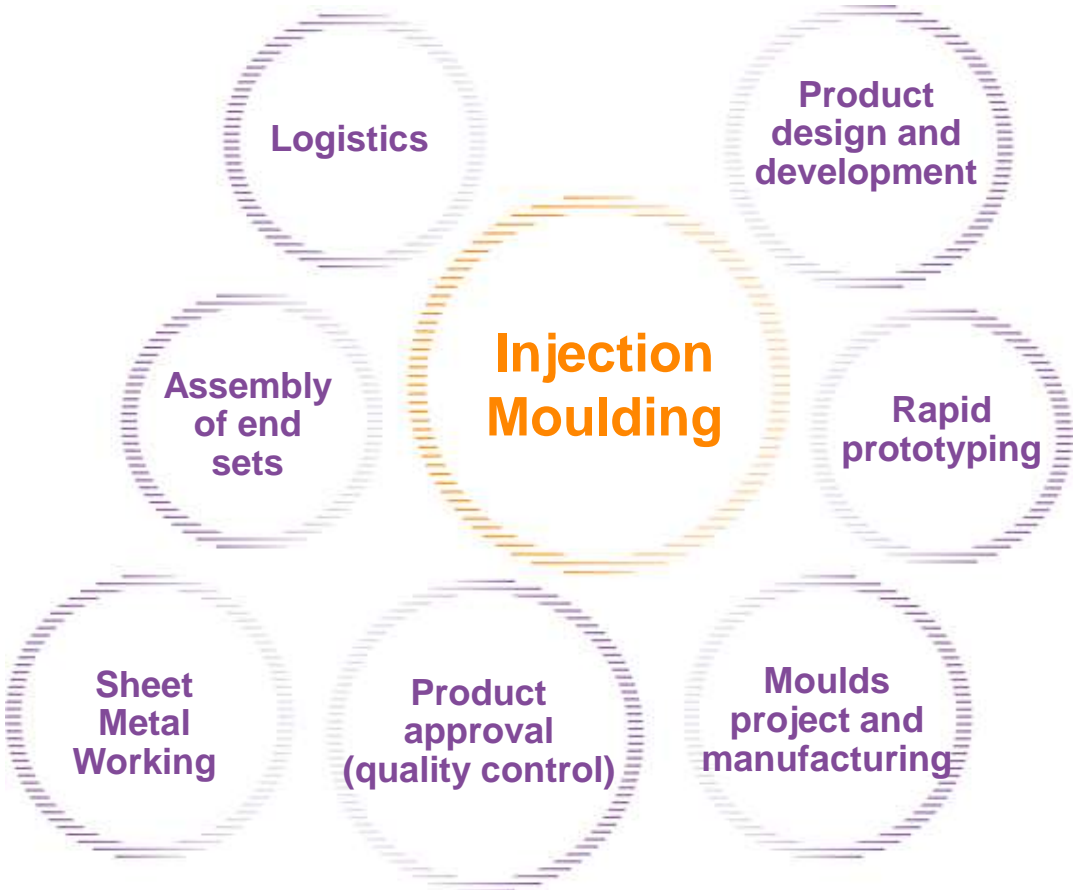
Intervention Areas

Accordinging:

NP EN ISO 9001:2015

IATF 16949:2016

NP EN ISO 14001:2015



Intervention Areas

Product design and development

Product development

Part Assessment
(CAD/CAE analysis)

Reverse engineering

Raw materials

Manufacturing



Prohibited the distribution or copying of content

Intervention Areas

Rapid Prototyping

FDM Technology

Fused Deposition Modeling

ABS

PC

PC/ABS

PA

ASA



Intervention Areas

Moulds project and manufacturing



Prohibited the distribution or copying of content

Intervention Areas

Moulds project and manufacturing

Equipments

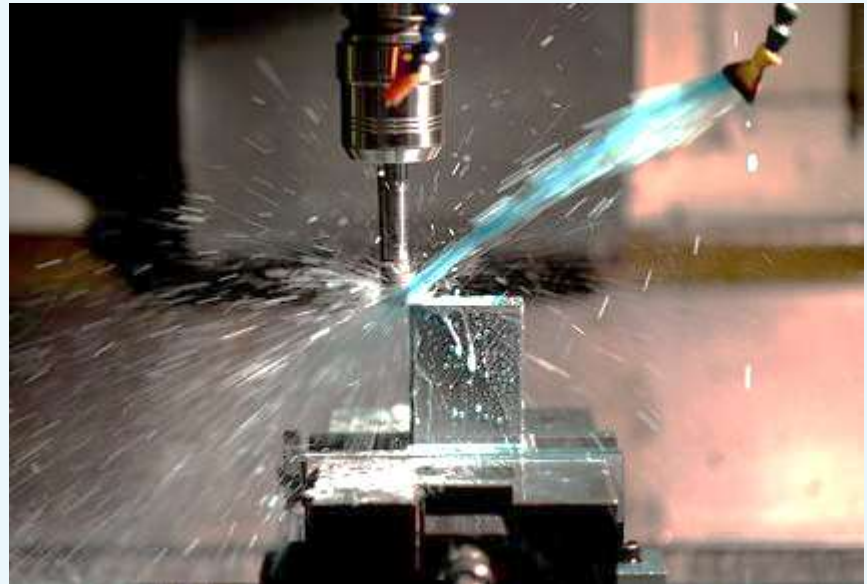
CNC Machining

Electric Discharge Machining

Grinding

Turning

Laser Welding



Intervention Areas

Injection Moulding

67 Injection Machines from 15 ton up to 1100 ton

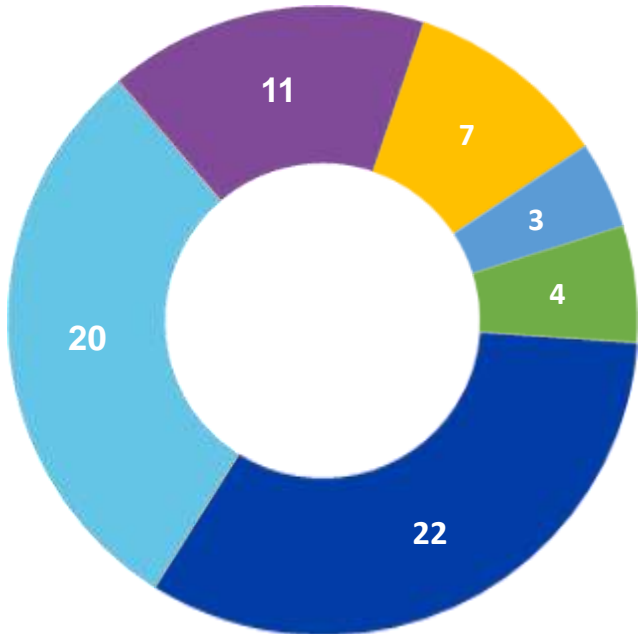


Intervention Areas

Injection Moulding

Machines

- 15-99 ton
- 100-199 ton
- 200-299 ton
- 300-399 ton
- 400-699 ton
- 700-1100 ton



For Bi-Injection



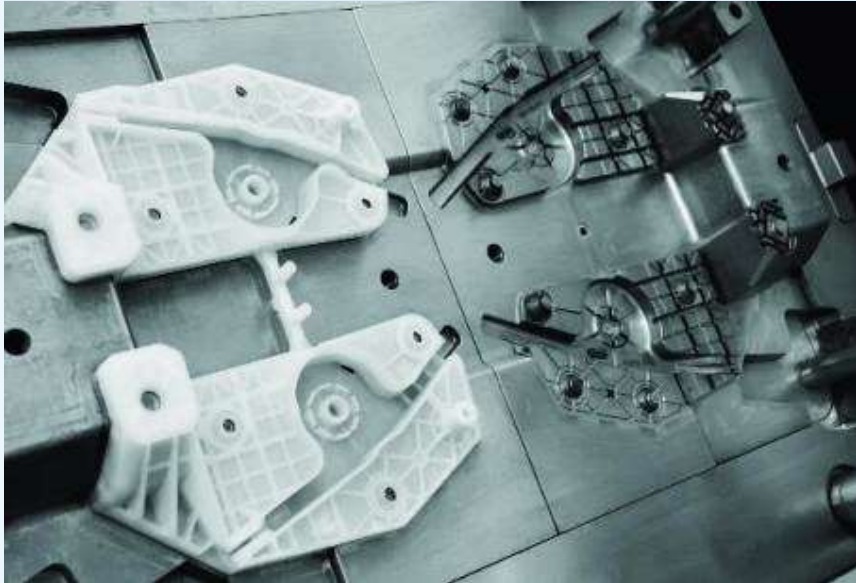
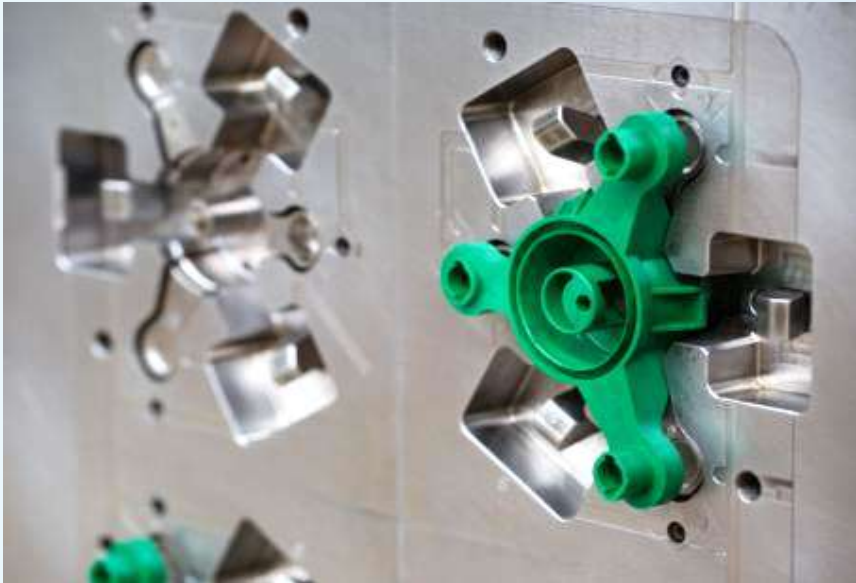
- 130 ton
- 220 ton
- 280 ton
- 400 ton

Prohibited the distribution or copying of content

Intervention Areas



Injection Moulding Automotive



Prohibited the distribution or copying of content

Intervention Areas



Injection Moulding Automotive

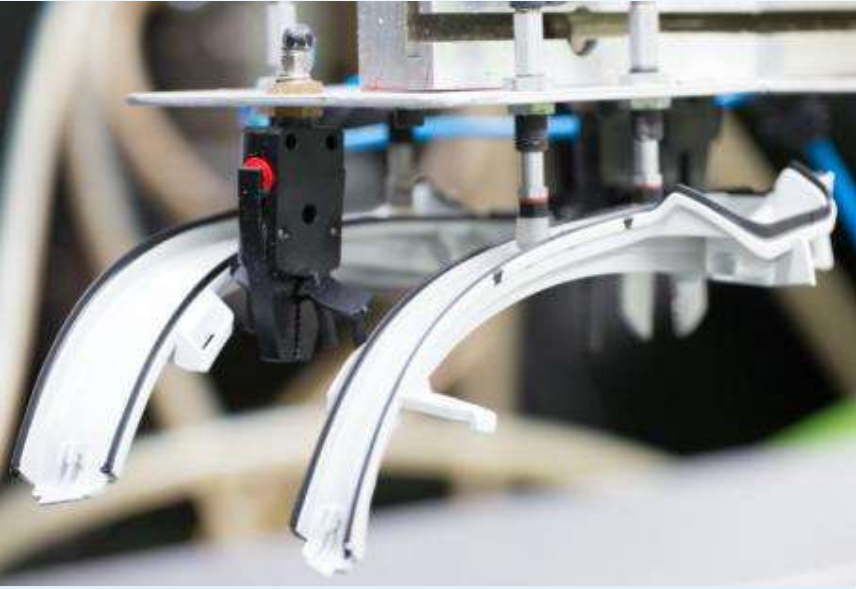
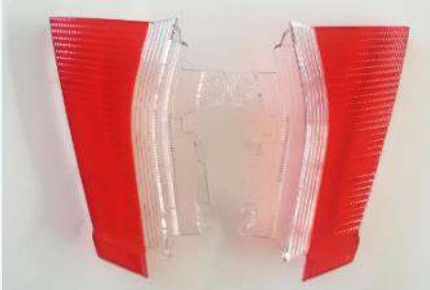


Prohibited the distribution or copying of content

Intervention Areas



Injection Moulding Automotive



Prohibited the distribution or copying of content

Intervention Areas



Injection Moulding Safety and Transportation



Prohibited the distribution or copying of content

Intervention Areas



Injection Moulding Safety and Transportation

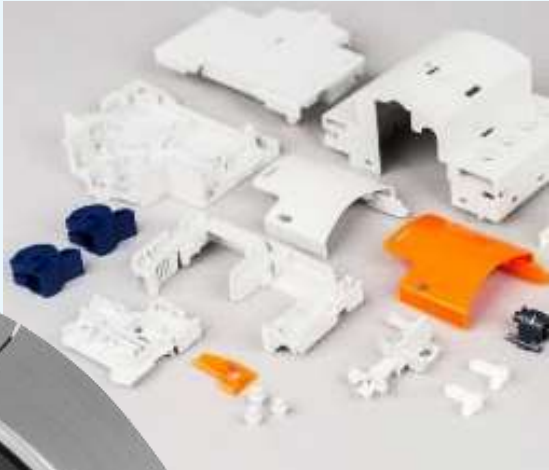


Prohibited the distribution or copying of content

Intervention Areas



Injection Moulding Electric and Electronic



Intervention Areas



Injection Moulding Home Appliances



Intervention Areas



Injection Moulding Houseware

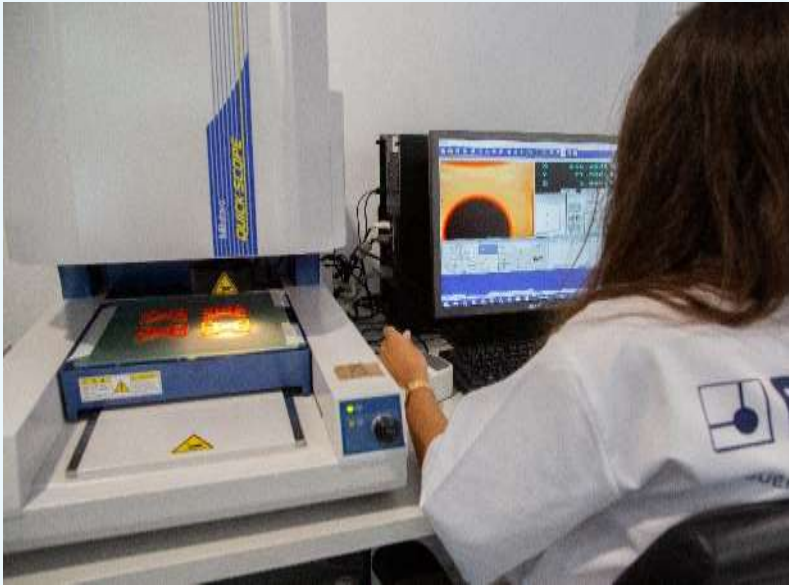
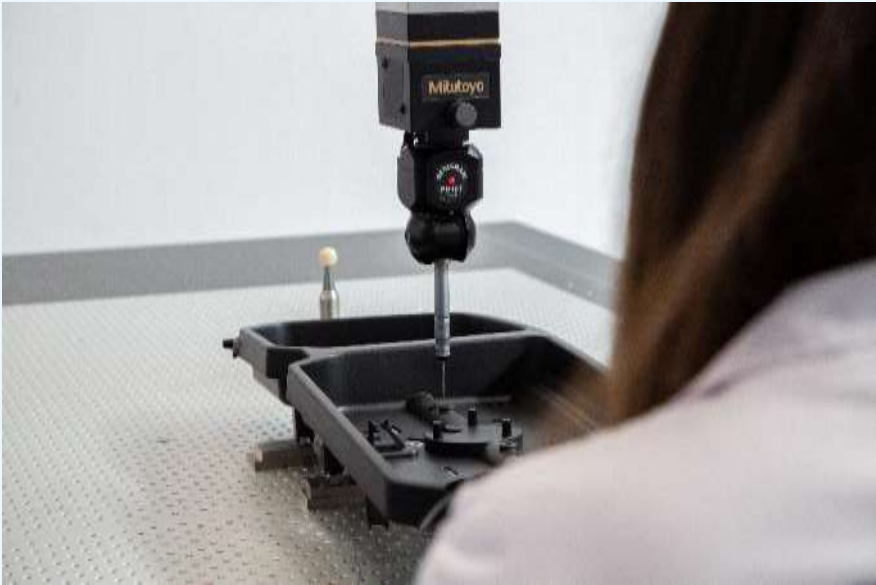


Prohibited the distribution or copying of content

Intervention Areas

Product approval (quality control)

Dimensional control (scanner, CMM machines, optical microscope, profile projector)



Intervention Areas

Product approval (quality control)

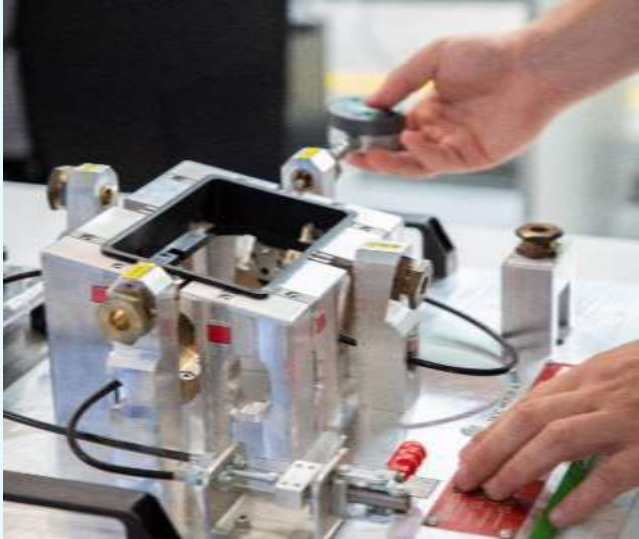
Mechanical

Tensile tests

Hardness

Colour

Moisture content



Intervention Areas

Sheet Metal Working

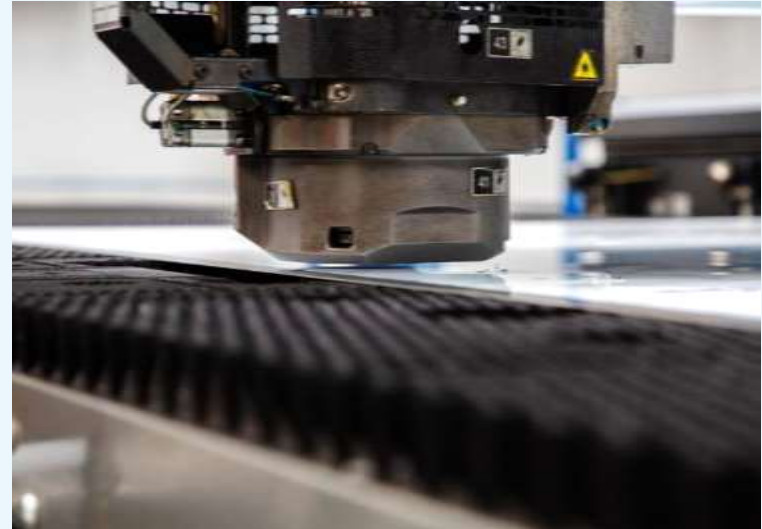
Equipments

Punching (up to 2500x1250 mm and 3 mm of thickness)

Bending (up to 2700 mm and 5 mm of thickness)

Stamping using progressive tools

CNC machining centers



Intervention Areas

Sheet Metal Working



Prohibited the distribution or copying of content

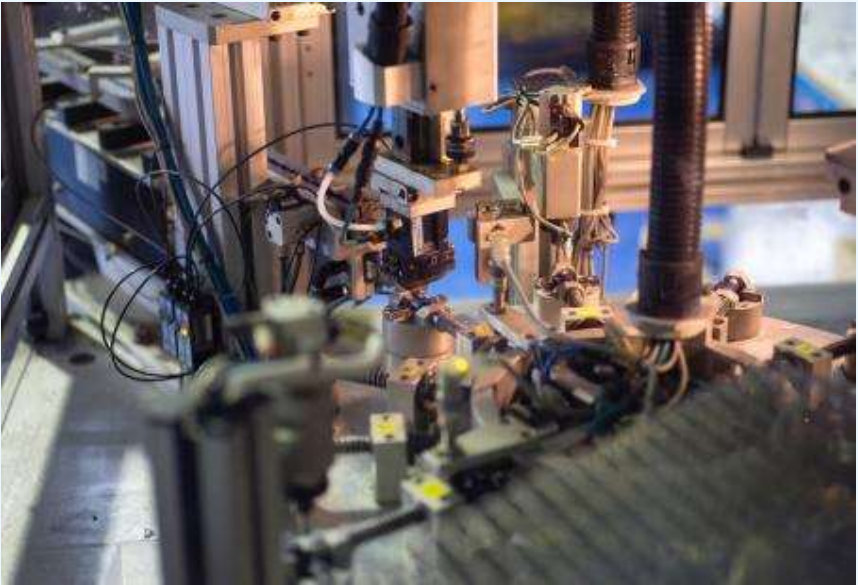
Intervention Areas

Sheet Metal Working



Intervention Areas

Assembly of end sets



Prohibited the distribution or copying of content

Intervention Areas

Logistics



Prohibited the distribution or copying of content

Location

Parque Industrial de Sobreposta
Rua da Alagoa – São Mamede Este
4715-533 Braga, Portugal

Telf +351 253 304 260

Fax +351 253 287 019

N 41° 33' 42,3" | W 08° 21' 00,1"

www.bramp.com



Mariana Silva
Head of Sales

comercial2@bramp.pt
Tel +351 919 998 770

www.bramp.com

João Costa
Sales

comercial@bramp.pt
Tel +351 914 146 852