

ENERGY METERS FOR DC EVC STATIONS



DMED4... DC ENERGY METER

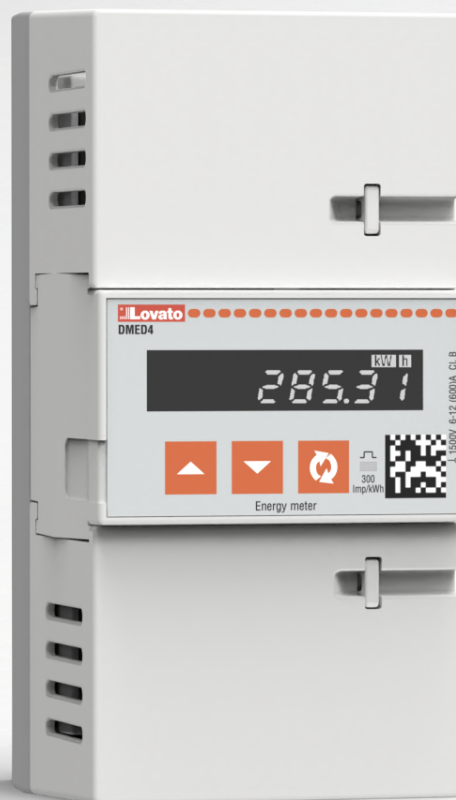
Designed for DC electrical vehicle charging stations

DMED4... is the new series of energy meters **specifically designed for DC electrical vehicle charging stations**. The maximum current **up to 1500A with 1500V** maximum voltage make the meters **suitable for fast charging applications**.

General features:

- Auxiliary power supply: 12-24VDC (9...31VDC)
- Operating temperature: -40°C +85°C
- Sealable terminal covers
- Metrological LED
- Approval with module B + D (eq. to MID for DC)
- IEC62052-11 (general requirements)
- IEC62052-31 for safety
- IEC62053-41, EN50470-4 (class B) for accuracy
- VDE-AR-E 2418-3-100 (German market, Eichrecht)
- cURus (UL61010-1, UL61010-2-30) ❶
- LNE(Décision n° 22.00.570.001.1 du 1er mars 2022) ❶

Compact version



Main functionalities:

- Measures: imported energy, exported energy, current, voltage, temperature
- Logbook for metrological events or fatal errors
- Real time clock (synchronized by the master)
- Compensation of the cable losses
- Digital signature functionality

Connection to the EVCS main board:

- RS485 or RS485 and Ethernet (2 models)
- Modbus slave or API over http protocols both with digital signature included

	SIZE 1			SIZE 2
Max voltage	1500V	1500V	1500V	1500V
I Max	150A	400A	600A	1500A
Max bar size	M10 ring terminal	40x10mm - 2x40x5mm		60x10mm - 2x60x5mm
I Transition	3A	8A	12A	30A
I Minimum	1.5A	4A	6A	15A
I Start	120mA	320mA	480mA	1200mA

Coding

Series	Communication port	MID certification	Max current
DMED4	04	D	0600
	03 = RS485 built-in	D=certified imported energy	0150=max 150A
	04 = RS485 + ethernet built-in	R=certified imported/exported energy	0400=max 400A
			0600=max 600A
			1500=max 1500A

❶ Pending

MOUNTING

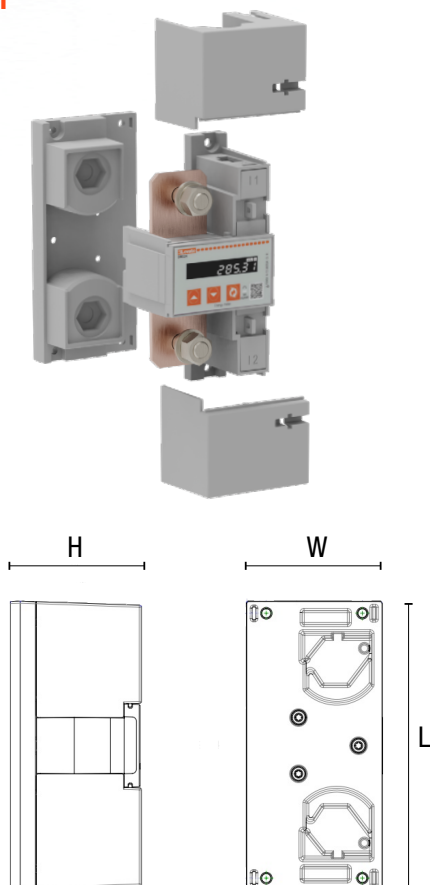
Very compact design

The very compact design, the extended range for the **operating temperature up to 85°C** and all the possible mounting options help the **integration even when the space is a critical point**.

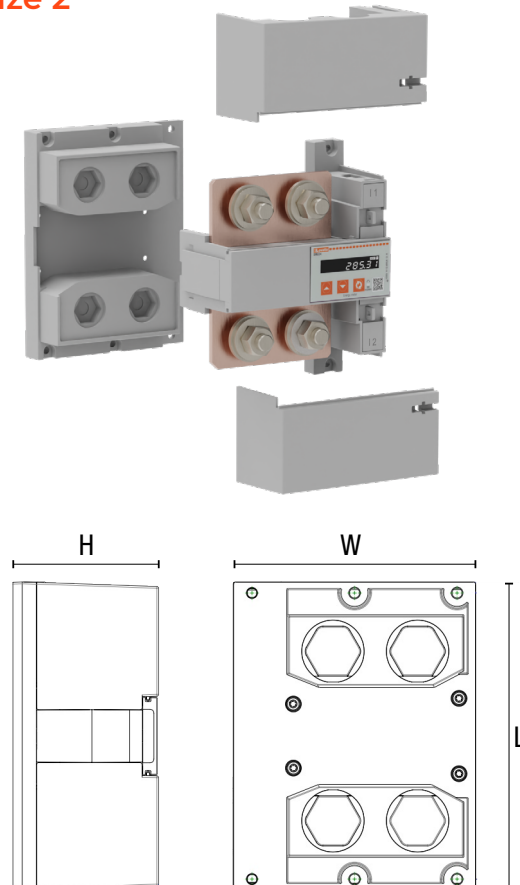
- Mounting on bars
- Rear mounting with plastic base and 4 screws
- Rear mounting with insulators and 2 screws

	SIZE 1	SIZE 2
Width W	68mm	130mm
Length L	144mm	160mm
Height H	67mm	78mm

Size 1



Size 2



ACCESSORIES - DATA CONCENTRATOR AND DISPLAY

In cases where the display information must be seen from outside the charge station.

A data concentrator capable of connecting 1 to 4 DMEs can be added, with DIN rail or panel mounting.

General features:

- Data concentrator from 1 to 4 channels
- DIN rail mounting or screws, 72x90x34mm
- Power supply: 12-24VDC (9...31VDC)
- Sealable terminal covers
- Operating temperature: -25°C +70°C
- Built-in Ethernet port with Modbus TCP protocol
- Built-in RS485 port with Modbus RTU protocol

Up to 4 detached meters





ENERGY METERS FOR DC EVC STATIONS



ENERGY AND AUTOMATION

LOVATO ELECTRIC S.P. A.

via Don E. Mazza, 12
24020 Gorle (Bergamo), ITALY
tel +39 035 4282111
info@LovatoElectric.com

www.LovatoElectric.com



The products described in this document are subject to update and modification at any time. The descriptions, technical and functional information, illustrations and instructions in the leaflet are to be considered as purely illustrative and consequently have no contractual relevance. Remember also that the products themselves must be used by qualified personnel in compliance with current plant engineering and installation standards, in order to avoid injury to persons or damage to property.