

STEEL 800 range

The most complete range for the most demanding industrial uses

- Length: up to 55 meters
- Cables: from 1 to 25 conductors
from 1 mm² to 25 mm²
- Collector: up to 100A
- Degree of protection: IP65
- Operating temperature: -5°C/+50°C
- Maximum winding speed: 30 m/minute
- Collector insulation voltage: 2.5 kV
- Housing: open in varnished steel and aluminum
- Winding spring: made of high quality steel, long-lasting

The reels are delivered with:

- power supply side cable, length 2.50 meters
- anchor sock adapted to the cable.

The reels are delivered with cable.

All models are available without cable (**ERSC** code, etc.), contact us. Cable installation is the responsibility of the customer.

Provide electrical protection upstream of the reel taking into account the most unfavorable situation (coiled cable).

The cable should enter the center of the cable guide, without sharp corners or friction.

How to choose the right model?

Given the technical nature of this range, it is recommended to ask yourself the following 3 questions, then consult us to define the appropriate model and the necessary options:

1) Which reel?

- number of conductors / section / power?
- length ?

2) What type of cable unwinding?

- horizontal unfolding?
- vertical unwinding (fixed to the ceiling or fixed to the floor)?
- mobile reel or unwinding in 2 directions?

3) What type of cable pulling?

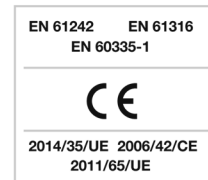
- manual cable pulling (by an operator)?
- mechanized cable pulling?

Unwinding type

- S8H models are only suitable for horizontal unwinding.
- The S8V models are suitable for horizontal unwinding and vertical unrolling.
- For vertical unwinding, the fixed flange is mandatory
- If the reel is mobile or unwinds in 2 directions, the rotating arm (codes **ERXS8-04** or **ERXS8-08**) is mandatory. In this case, the pawl is excluded.

Cable Pulling Type

Safety Return, which slows down and secures the winding, is strongly recommended in the event of manual pulling. It is not suitable for mechanized pulling (gate, crane, overhead crane, etc.)



Models to configure

For other models, once the reel is defined, you must add the necessary options:

- flange (fixed or pivoting)
 - guide / ratchet
 - Safety return
 - rotary guidance in function :
 - the type of progress
 - the type of draw.
- Please note, not all options fit on all models: refer to the table below.

“Turnkey” models

Models on yellow background in the table below. These models are available from stock. For the sake of simplicity, they are offered **turnkey**, fully equipped:

- always with roller cable guide
- always with ratchet (removable)

in several versions:

- with Safety Return (if manual pulling) or without Safety Return (if mechanized pulling)
- with fixed flange (compulsory if vertical unwinding) or with pivoting flange.

The flanges are delivered disassembled.

STEEL 800 range

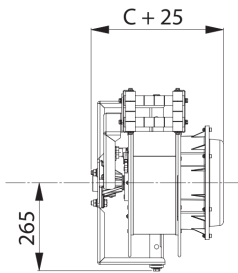
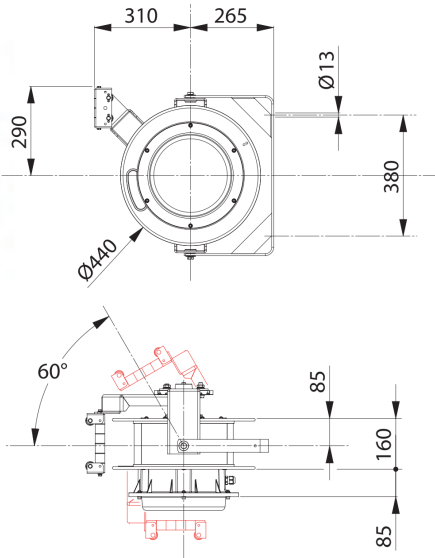


Equipment

- standard on "Turnkey" models
 - optional on other "configure" models
- According to table below

Swivel flange

Horizontal use
Wall mounting



Code ERXS8-01

Safety Return

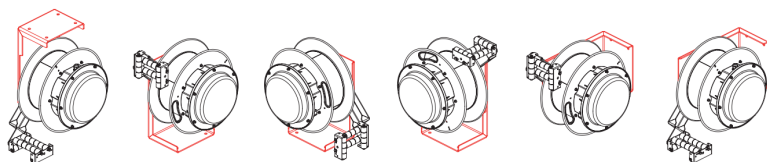
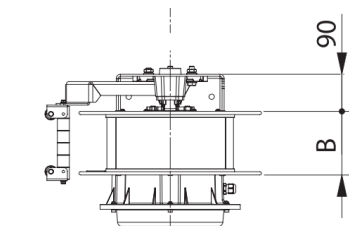
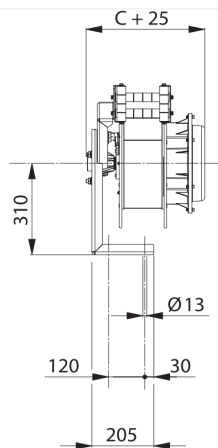
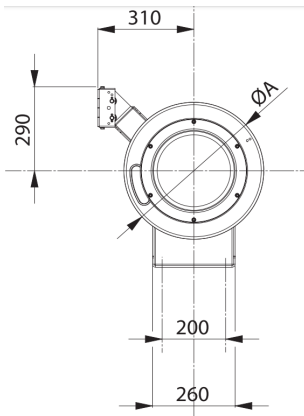
Slows down and secures winding
Highly recommended if manual draw
Can only be installed during manufacturing



Code ERXS8-02

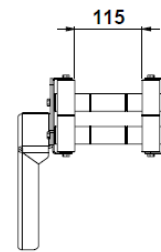
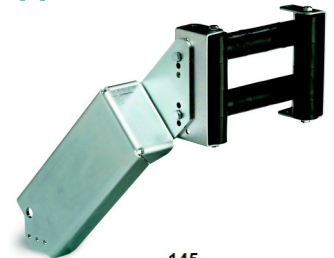
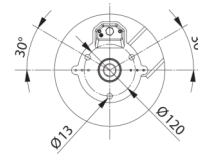
Fixed flange

Wall, floor or ceiling mounting
Horizontal and vertical use
Mandatory if vertical use

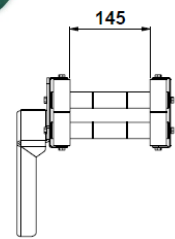


Code ERXS8-03

Cable guide / Stopper



Code ERXS8-06

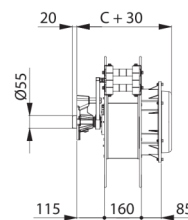
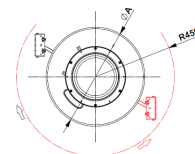


Code ERXS8-07

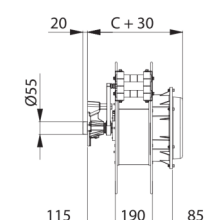
Rotating arm

Unwinding in 2 directions or mobile reel.

Can only be installed during manufacturing



Code ERXS8-04



Code ERXS8-08

STEEL 800 range



F = Fixed flange
P = Swivel flange

■ « Turnkey » models ■ Optional ■ Included ■ NON

Number of conductors	Section (mm²)	Total length	Cable type	Model		Collector's intensity (A)	kW (20°C)		Cable Ø (mm)	ERXS8/01	ERXS8/02	ERXS8/03	ERXS8/04	ERXS8/06	ERXS8/07	ERXS8/08	Type	Dimensions (mm)	Code article																		
				Horizontal Use only	Vertical use only																																
1 x	16	32 m	H05VV-F	S8H01		60	230V	2	8	8							1	ØA440xB160xC365	ER01160-32V-S8H01																		
				S8H02-F															1	ER01250-32V-S8H02-F																	
				S8H02-FSR															1	ER01250-32V-S8H02-FSR																	
				S8H02-P															1	ER01250-32V-S8H02-P																	
				S8H02-PSR															1	ER01250-32V-S8H02-PSR																	
				S8H03															1	ER01250-42V-S8H03																	
3 G	2.5	31 m	H05VV-F		S8V01	32	230V	2	230V	3.5	11,5						1	ØA440xB160xC365	ER03025-31V-S8V01																		
					S8V02-F														1	ER03025-31R-S8V02-F																	
					S8V02-FSR														1	ER03025-31R-S8V02-FSR																	
					S8V02-P														1	ER03025-31R-S8V02-P																	
					S8V02-PSR														1	ER03025-31R-S8V02-PSR																	
																			1																		
		41 m	H07RN-F		S8H04	32	230V	2	230V	3.5	10							1	ØA440xB160xC365	ER03025-41V-S8H04																	
					S8H05															1	ER03025-41R-S8H05																
																				1																	
																				1																	
																				1																	
																				1																	
4 G	2.5	31 m	H05VV-F		S8V03	32	400V	7	10	10							1	ØA440xB160xC365	ER04025-31V-S8V03																		
					S8V04-F														1	ER04025-31R-S8V04-F																	
					S8V04-FSR														1	ER04025-31R-S8V04-FSR																	
					S8V04-P														1	ER04025-31R-S8V04-P																	
					S8V04-PSR														1	ER04025-31R-S8V04-PSR																	
																			1																		
				41 m	H07RN-F															S8H06	32	400V	7	10	10	12,5							1	ØA440xB160xC365	ER04025-41V-S8H06		
																				S8H07															1	ER04025-41R-S8H07	
																																			1		
																																			1		
																																			1		
																																			1		
		55 m	H05VV-F				S8H08	32	400V	7	10	10	11							2															ØA550xB190xC395	ER04025-55V-S8H08	
							S8H09																													2	ER04025-55R-S8H09
																																				2	
																																				2	
																																				2	
																																				2	
		4	22 m	H05VV-F		S8V05	60	400V	6	11	8,5	14							1	ØA440xB160xC365	ER04040-22V-S8V05																
						S8V06-F															1	ER04040-22R-S8V06-F															
						S8V06-FSR															1	ER04040-22R-S8V06-FSR															
						S8V06-P															1	ER04040-22R-S8V06-P															
						S8V06-PSR															1	ER04040-22R-S8V06-PSR															
																					1																
	26 m			H07RN-F		S8V07															32	400V	6	11	8,5	14							1	ØA440xB160xC410	ER04040-22V-S8V07		
						S8V08																													1	ER04040-22R-S8V08	
						S8V09																													1	ER04040-26V-S8V09	
						S8V10																													1	ER04040-26R-S8V10	
						S8V11																													1	ER04040-26V-S8V11	
						S8V12																													1	ER04040-26R-S8V12	
	31 m		H05VV-F		S8H10	32	400V	6	11	8,5	14							1	ØA440xB160xC365	ER04040-31V-S8H10																	
					S8H11															1	ER04040-31R-S8H11																
					S8H12															1	ER04040-31V-S8H12																
					S8H13															1	ER04040-31R-S8H13																
																				1																	
																				1																	
			45 m	H05VV-F																S8H14	32	400V	6	11	8,5	14							2	ØA550xB190xC395	ER04040-45V-S8H14		
																				S8H15															2	ER04040-45R-S8H15	
																				S8H16															2	ER04040-45V-S8H16	
																				S8H17															2	ER04040-45R-S8H17	
																																			2		
																																			2		
	6	17 m	H05VV-F		S8V13	100	400V	17	22	17								1	ØA440xB160xC410	ER04060-17V-S8V13																	
					S8V14															1	ER04060-17R-S8V14																
					S8V15															1	ER04060-17V-S8V15																
					S8V16															1	ER04060-17R-S8V16																
					S8V17															1	ER04060-26V-S8V17																
					S8V18															1	ER04060-26R-S8V18																
26 m			H05VV-F		S8V19															60	400V	17	22	17								1	ØA550xB160xC410	ER04060-26V-S8V19			
					S8V20																													1	ER04060-26R-S8V20		
					S8H18																													2	ER04060-40V-S8H18		
					S8H19																													2	ER04060-40R-S8H19		
					S8H20																													2	ER04060-40V-S8H20		
					S8H21																													2	ER04060-40R-S8H21		
10		16 m	H05VV-F		S8V21	100	400V	17	22	17								2	ØA550xB160xC410	ER04100-16V-S8V21																	
					S8V22															2	ER04100-16R-S8V22																
					S8V23															2	ER04100-16V-S8V23																
					S8V24															2	ER04100-16R-S8V24																
					S8H22															2	ER04100-25V-S8H22																
					S8H23															2	ER04100-25R-S8H23																
		25 m	H05VV-F		S8H24															60	400V	17	22	17								2	ØA550xB190xC440	ER04100-25V-S8H24			
					S8H25																													2	ER04100-25R-S8H25		
					S8H26																													2	ER04100-40V-S8H26		
					S8H27																													2	ER04100-40R-S8H27		
					S8H28																													2	ER04100-40V-S8H28		
					S8H29																													2	ER04100-40R-S8H29		
16	16 m	H05VV-F		S8V25	100	400V	17	22	24							2	ØA550xB160xC410	ER04160-16V-S8V25																			
				IGUS														2	ER04160-16P-S8V26																		
				S8H30														2	ER04160-30V-S8H30																		
	30 m	H05VV-F		S8H31														100	400V	17	22	24							2	ØA650xB190xC440	ER04160-30P-S8H31						
																															2						
																															2						

20231025 - Document et photos non contractuels

STEEL 800 range



F = Fixed flange
P = Swivel flange

☐ « Turnkey » models ☐ Optional ☐ Included ☐ NON

Number of conductors	Section (mm ²)	Total length	Cable type	Model		Collector's intensity (A)	kW (20°C)		Cable Ø (mm)	ERXS/01	ERXS/02	ERXS/03	ERXS/04	ERXS/06	ERXS/07	ERXS/08	Type	Dimensions (mm)	Code article														
				Horizontal Use only	Vertical use only		⊙	⚡																									
5 G	2,5	22 m	H05VV-F	S8V27		32	7	10	12,5	ERXS/01	ERXS/02	ERXS/03	ERXS/04	ERXS/06	ERXS/07	ERXS/08	1	ØA440xB160xC365	ER05025-22V-S8V27														
				S8V28-F															ER05025-22R-S8V28-F														
			H07RN-F	S8V28-FSR															ER05025-22R-S8V28-FSR														
				S8V28-P															ER05025-22R-S8V28-P														
			S8V28-PSR		ER05025-22R-S8V28-PSR																												
		26 m	H05VV-F	S8V29															ER05025-26V-S8V29														
				H07RN-F	S8V30														ER05025-26R-S8V30														
		31 m	H05VV-F		S8H32														ER05025-31V-S8H32														
				H07RN-F	S8H33-F														ER05025-31R-S8H33-F														
		S8H33-FSR			ER05025-31R-S8H33-FSR																												
	55 m	H05VV-F	S8H34		ER05025-55V-S8H34																												
			H07RN-F	S8H35		ER05025-55R-S8H35																											
	6	17 m		H05VV-F	S8V31		60	17	22	17	ERXS/01	ERXS/02	ERXS/03	ERXS/04	ERXS/06	ERXS/07	ERXS/08	1	ØA440xB160xC410	ER05060-17V-S8V31													
			S8V32-F		ER05060-17R-S8V32-F																												
			H07RN-F	S8V32-FSR		ER05060-17R-S8V32-FSR																											
				S8V32-P		ER05060-17R-S8V32-P																											
		S8V32-PSR		ER05060-17R-S8V32-PSR																													
		26 m	H05VV-F	S8V33		ER05060-17V-S8V33																											
				H07RN-F	S8V34															ER05060-17R-S8V34													
			H05VV-F		S8V35															ER05060-26V-S8V35													
				H07RN-F	S8V36-F															ER05060-26R-S8V36-F													
		S8V36-FSR			ER05060-26R-S8V36-FSR																												
		40 m	H05VV-F	S8V37		ER05060-26V-S8V37																											
				H07RN-F	S8V38-F															ER05060-26R-S8V38-F													
			S8V38-FSR		ER05060-26R-S8V38-FSR																												
			S8V38-P		ER05060-26R-S8V38-P																												
		S8V38-PSR		ER05060-26R-S8V38-PSR																													
		16	15 m	IGUS	S8V39															100	35	40	24	ERXS/01	ERXS/02	ERXS/03	ERXS/04	ERXS/06	ERXS/07	ERXS/08	2	ØA550xB160xC410	ER05160-15P-S8V39
	S8V40				ER05160-15P-S8V40																												
	S8H40				ER05160-30P-S8H40																												
	S8H41				ER05160-30P-S8H41																												
	8 x	1,5	22 m	H05VV-F	S8V41		16	4,5A	11,5	ERXS/01	ERXS/02	ERXS/03	ERXS/04	ERXS/06	ERXS/07	ERXS/08	1	ØA440xB160xC410	ER08015-22V-S8V41														
					S8H42														ER08015-40V-S8H42														
		2,5	17 m		S8V42														ER08025-17V-S8V42														
					S8V43														ER08025-26V-S8V43														
			40 m		S8H43														ER08025-40V-S8H43														
					S8H44														ER08025-55V-S8H44														
		10 x	1,5		17 m	H05VV-F													S8V44		16	4,5A	15,5	ERXS/01	ERXS/02	ERXS/03	ERXS/04	ERXS/06	ERXS/07	ERXS/08	1	ØA440xB160xC410	ER10015-17V-S8V44
																			S8V45														ER10015-26V-S8V45
			55 m		S8H45														ER10015-55V-S8H45														
17 m					S8V46														ER12015-17P-S8V46														
	12 x	1,5	26 m	IGUS	S8V47		16	4,5A	13	ERXS/01	ERXS/02	ERXS/03	ERXS/04	ERXS/06	ERXS/07	ERXS/08	1	ØA440xB160xC410	ER12015-26P-S8V47														
S8H46					ER12015-40P-S8H46																												
40 m		S8H47			ER12015-55P-S8H47																												
		55 m	S8V48		ER12025-17P-S8V48																												
2,5	17 m		S8V49		ER12025-26P-S8V49																												
		S8H48			ER12025-40P-S8H48																												
	26 m	S8H49			ER16010-32P-S8H49																												
		S8V50			ER16015-18P-S8V50																												
16 x	1,5	18 m	IGUS		S8V51														16	4,5A	17,5	ERXS/01	ERXS/02	ERXS/03	ERXS/04	ERXS/06	ERXS/07	ERXS/08	1	ØA440xB160xC480	ER16015-26P-S8V51		
					S8H50																										ER16015-40P-S8H50		
		26 m		S8V52		ER16025-18P-S8V52																											
				S8H51		ER16025-26P-S8H51																											
	2,5	18 m		S8H52		ER16025-40P-S8H52																											
				26 m	S8V53		ER18015-17P-S8V53																										
		40 m			S8V54		ER18015-26P-S8V54																										
				18 m	S8H53		ER18015-40P-S8H53																										
18 G	1,5	17 m			IGUS	S8V55		16	4,5A	17,5	ERXS/01	ERXS/02	ERXS/03	ERXS/04	ERXS/06	ERXS/07	ERXS/08	1													ØA440xB160xC500	ER18025-17P-S8V55	
				S8H54		ER18025-26P-S8H54																											
	26 m	S8V56		ER25015-16P-S8V56																													
		S8H55		ER25015-25P-S8H55																													
	2,5	17 m	S8V57			ER25015-16P-S8V57																											
			S8H56			ER25015-25P-S8H56																											
40 m		S8V58		ER25025-15P-S8V58																													
		S8H57		ER25025-25P-S8H57																													
25 G	1,5	16 m	IGUS	S8V59		16	4,5A												19,5	ERXS/01	ERXS/02	ERXS/03	ERXS/04	ERXS/06	ERXS/07	ERXS/08	2	ØA550xB190xC610	ER25015-16P-S8V59				
				S8H58																									ER25015-25P-S8H58				
	25 m	S8V60		ER25025-15P-S8V60																													
		S8H59		ER25025-25P-S8H59																													
2,5	15 m	S8V61		ER25025-15P-S8V61																													
		S8H60		ER25025-25P-S8H60																													

20231025 - Document et photos non contractuels